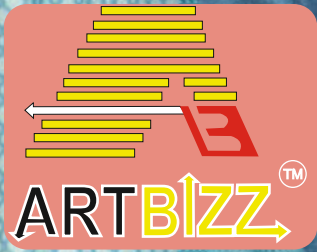




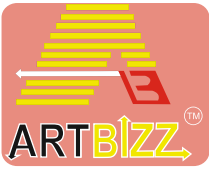
SNOW *A Smart Move*





SNOW





SNOW



Sr. No. 351



Sr. No. 352



Sr. No. 353



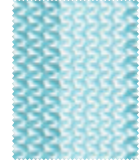
Sr. No. 354



Sr. No. 355



Sr. No. 356



Sr. No. 357



Sr. No. 358



Sr. No. 359



Sr. No. 360



Sr. No. 361



Sr. No. 362



Sr. No. 363



Sr. No. 364



Sr. No. 365



Sr. No. 366



Sr. No. 367



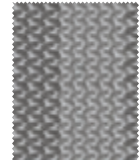
Sr. No. 368



Sr. No. 369



Sr. No. 370



Sr. No. 371



Sr. No. 372



Sr. No. 373



Sr. No. 374



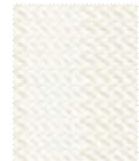
Sr. No. 375



Sr. No. 376



Sr. No. 377



Sr. No. 378



Sr. No. 379



Sr. No. 380



Sr. No. 381



Sr. No. 382



Sr. No. 383



Sr. No. 384



Sr. No. 385



Sr. No. 386



Sr. No. 387



Sr. No. 388



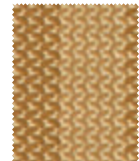
Sr. No. 389



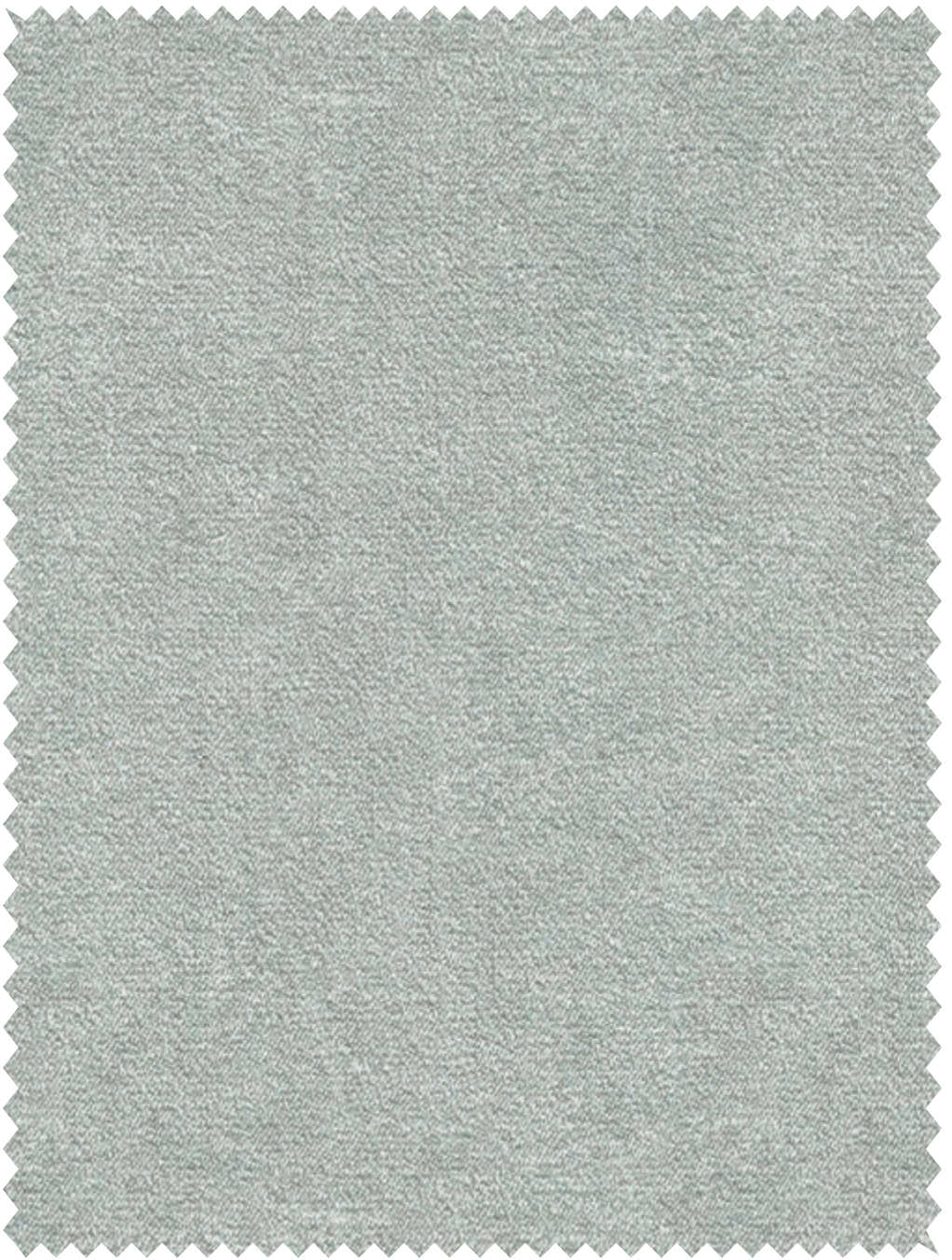
Sr. No. 390



Sr. No. 391


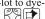


Sr. No. 392



Collection : SNOW

Sr. No. : 351

Usable Fabric Width : 48"/122 cms
Composition : 100% Polyester , GSM : 200
Colour shades may slightly vary from dye-lot to dye-lot
Wash :  End Use : 

Price Code : A



For more info, scan:





Collection : SNOW

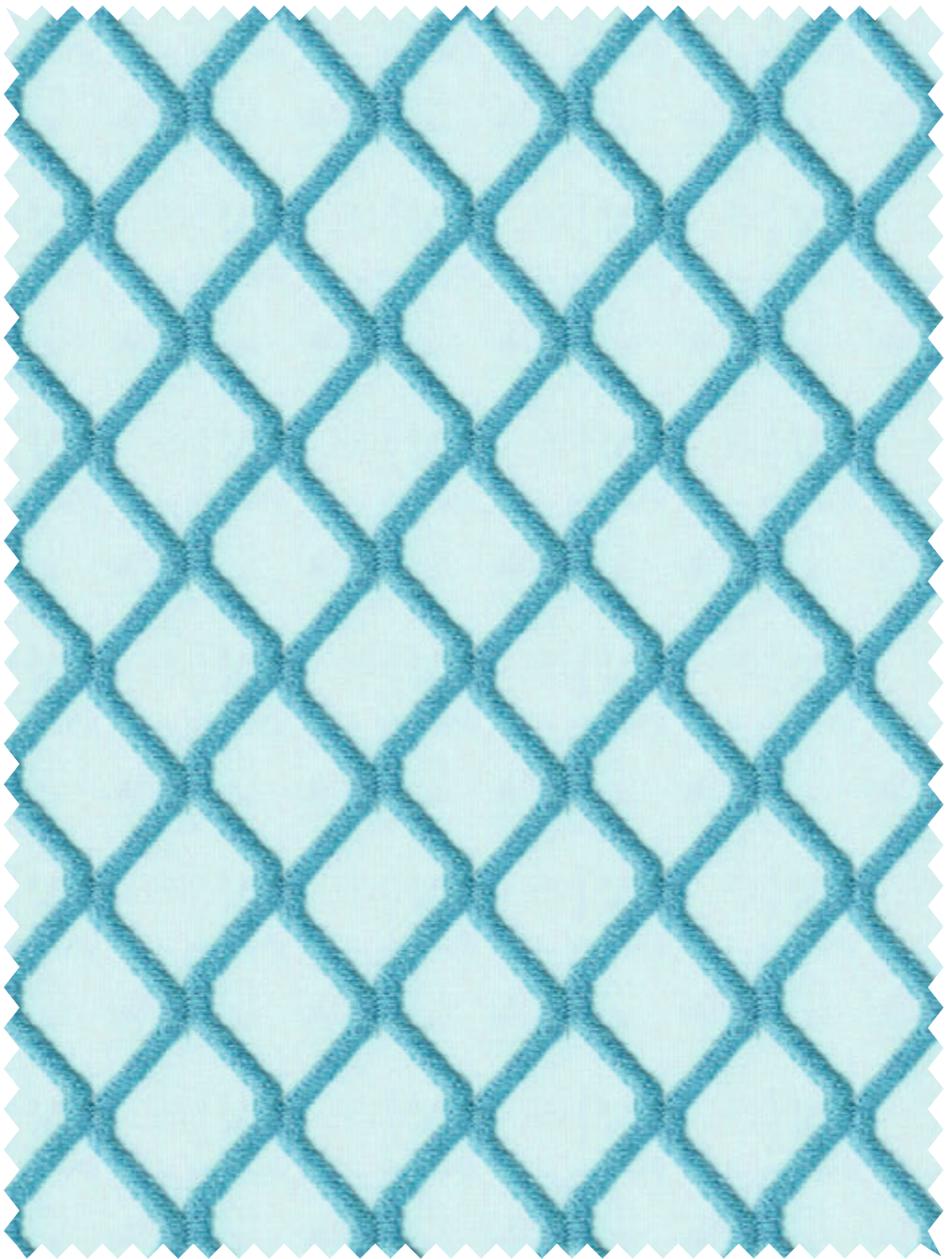
Sr. No. : 352

Usable Fabric Width : 48"/122 cms
Composition : 100% Polyester , GSM : 200
Colour shades may slightly vary from dye-lot to dye-lot
Wash :  End Use : 

Price Code : A

For more info , scan:





Collection : SNOW

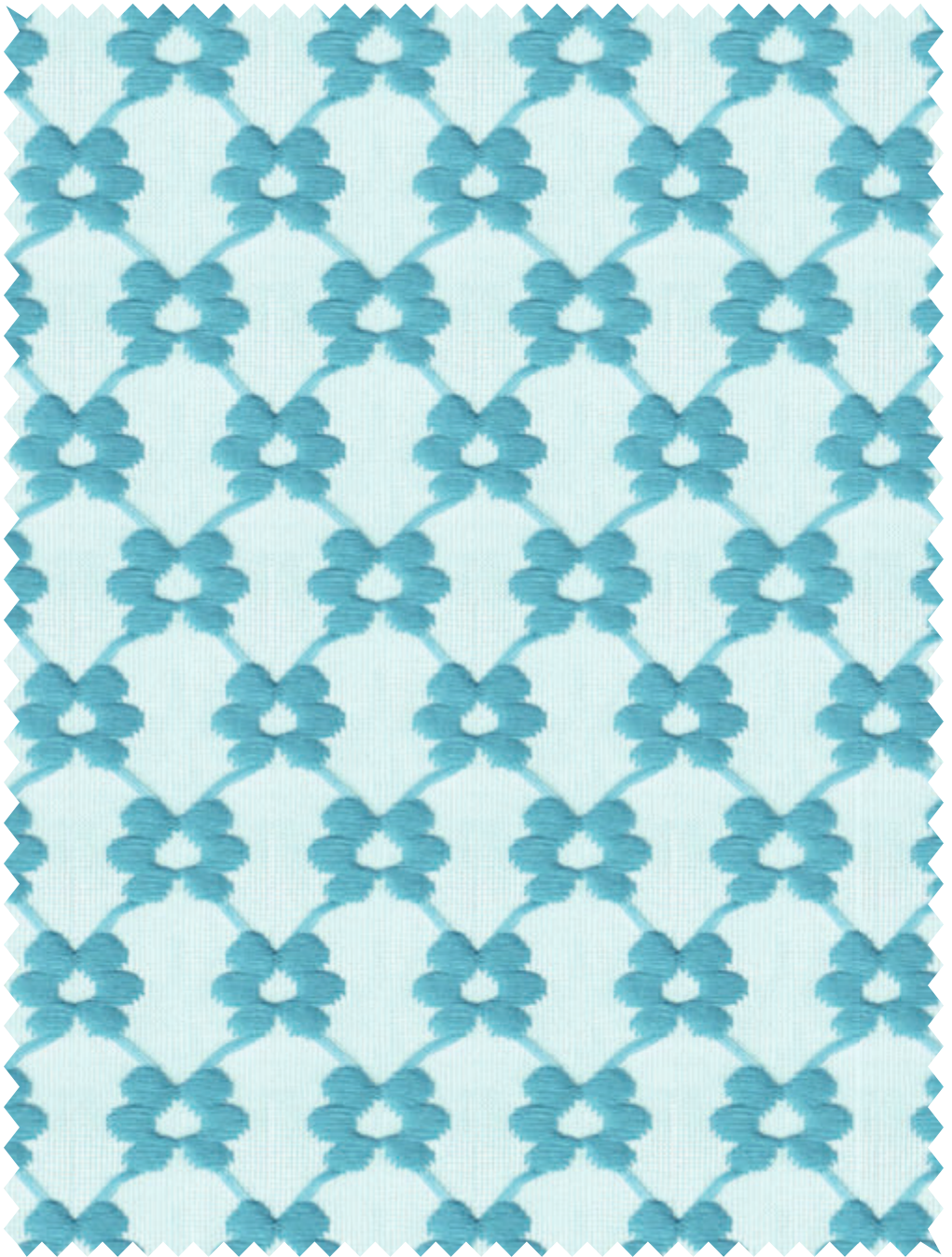
Sr. No. : 353

Usable Fabric Width : 48"/122 cms
Composition : POLY NETT , GSM : 100
Colour shades may slightly vary from dye-lot to dye-lot
Wash : 30°C 30°C 30°C End Use : 30°C

Price Code : B

For more info, scan:





Collection : SNOW

Sr. No. : 354

Usable Fabric Width : 48"/122 cms
Composition : POLY NETT , GSM : 100
Colour shades may slightly vary from dye-lot to dye-lot
Wash : 30°C 30°C 30°C End Use : 30°C

Price Code : B

For more info , scan:





Collection : SNOW

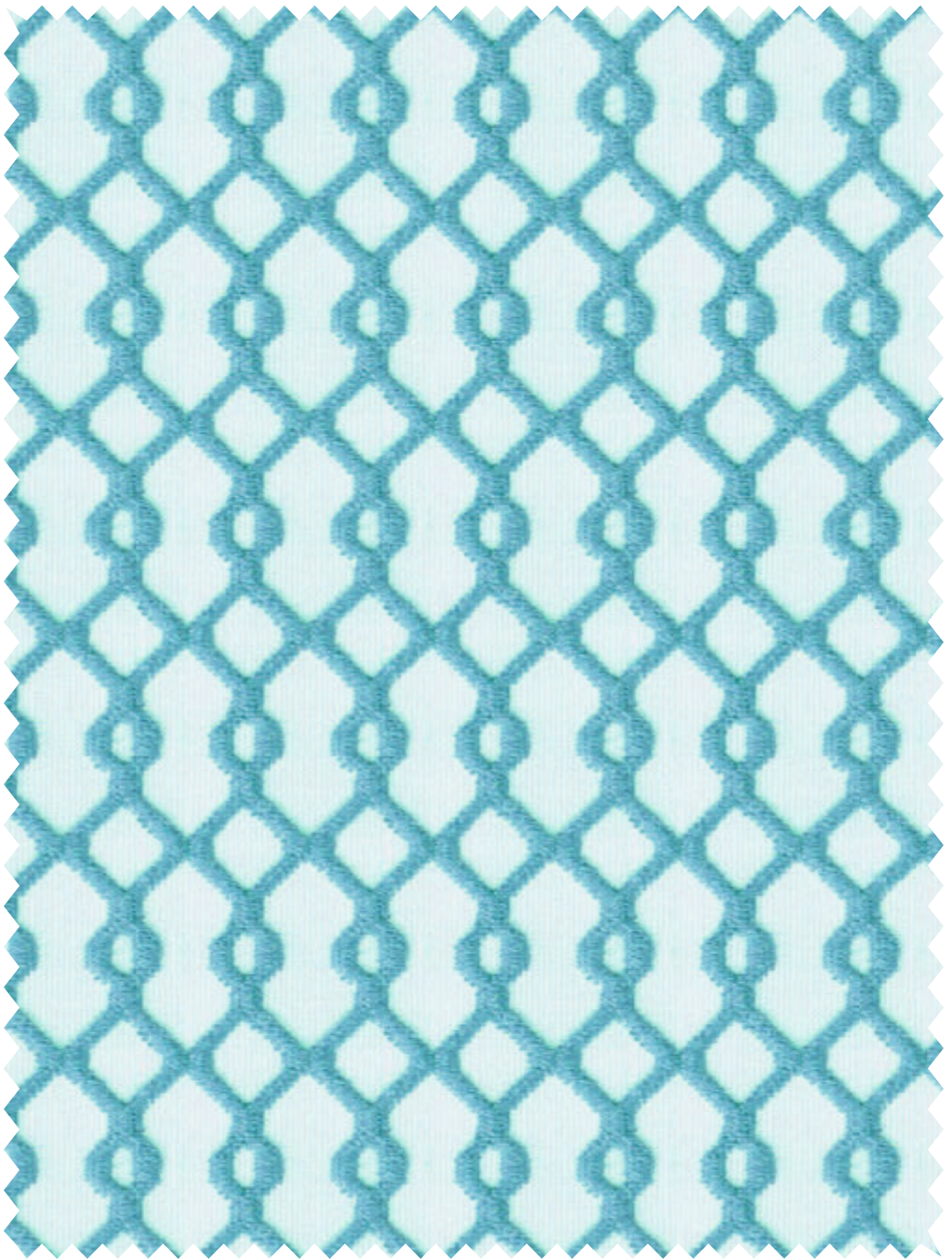
Sr. No. : 355

Usable Fabric Width : 48"/122 cms
Composition : POLY NETT , GSM : 100
Colour shades may slightly vary from dye-lot to dye-lot
Wash :  End Use : 

Price Code : B

For more info , scan:





Collection : SNOW

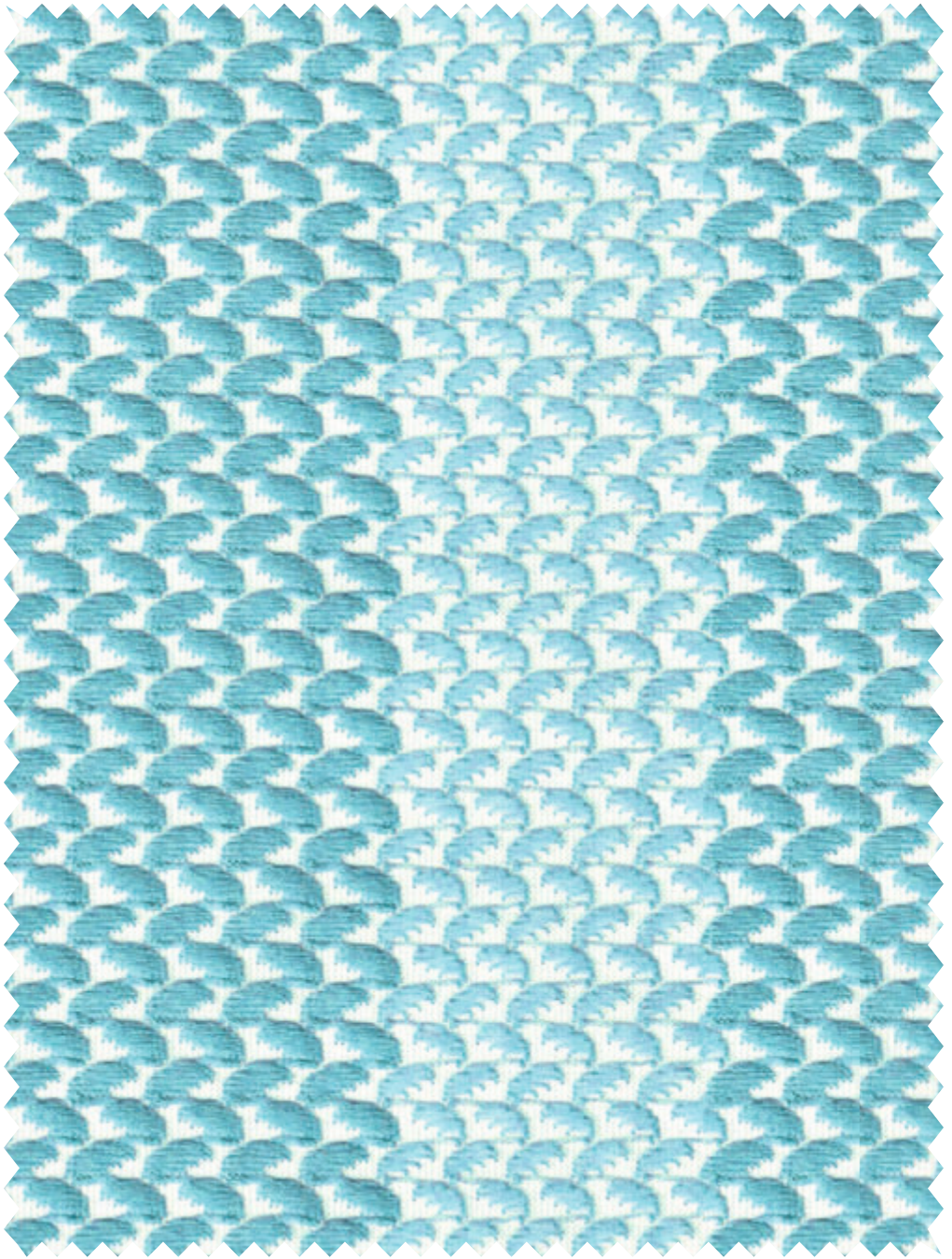
Sr. No. : 356

Usable Fabric Width : 48"/122 cms
Composition : POLY NETT , GSM : 100
Colour shades may slightly vary from eye-lot to dye-lot
Wash : 30°C 30°C 30°C End Use : 30°C

Price Code : B

For more info, scan:





Collection : SNOW

Sr. No. : 357

Usable Fabric Width : 48"/122 cms
Composition : POLY NETT , GSM : 100
Colour shades may slightly vary from dye-lot to dye-lot
Wash :  End Use : 

Price Code : B



For more info , scan:





Collection : SNOW

Sr. No. : 358

Usable Fabric Width : 48"/122 cms
Composition : 100% Polyester , GSM : 200
Colour shades may slightly vary from dye-lot to dye-lot
Wash :  End Use : 

Price Code : A



For more info , scan:





Collection : SNOW

Sr. No. : 359

Usable Fabric Width : 48"/122 cms
Composition : 100% Polyester , GSM : 200
Colour shades may slightly vary from dye-lot to dye-lot
Wash :  End Use : 

Price Code : A

For more info , scan:





Collection : SNOW

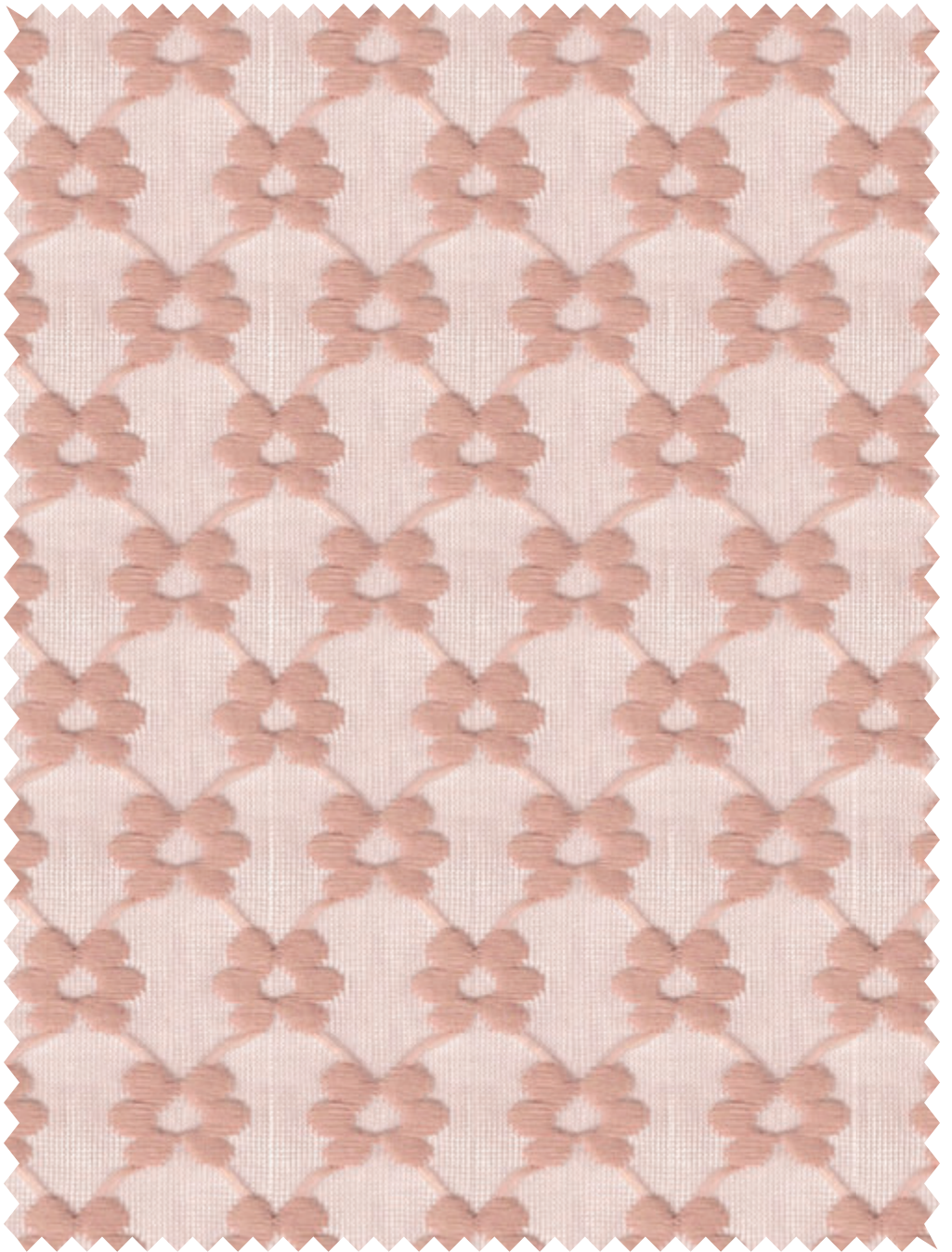
Sr. No. : 360

Usable Fabric Width : 48"/122 cms
Composition : POLY NETT , GSM : 100
Colour shades may slightly vary from dye-lot to dye-lot
Wash :  End Use : 

Price Code : B

For more info , scan:





Collection : SNOW

Sr. No. : 361

Usable Fabric Width : 48"/122 cms
Composition : POLY NETT , GSM : 100
Colour shades may slightly vary from dye-lot to dye-lot
Wash : 30°C 30°C End Use : 30

Price Code : B

For more info , scan:





Collection : SNOW

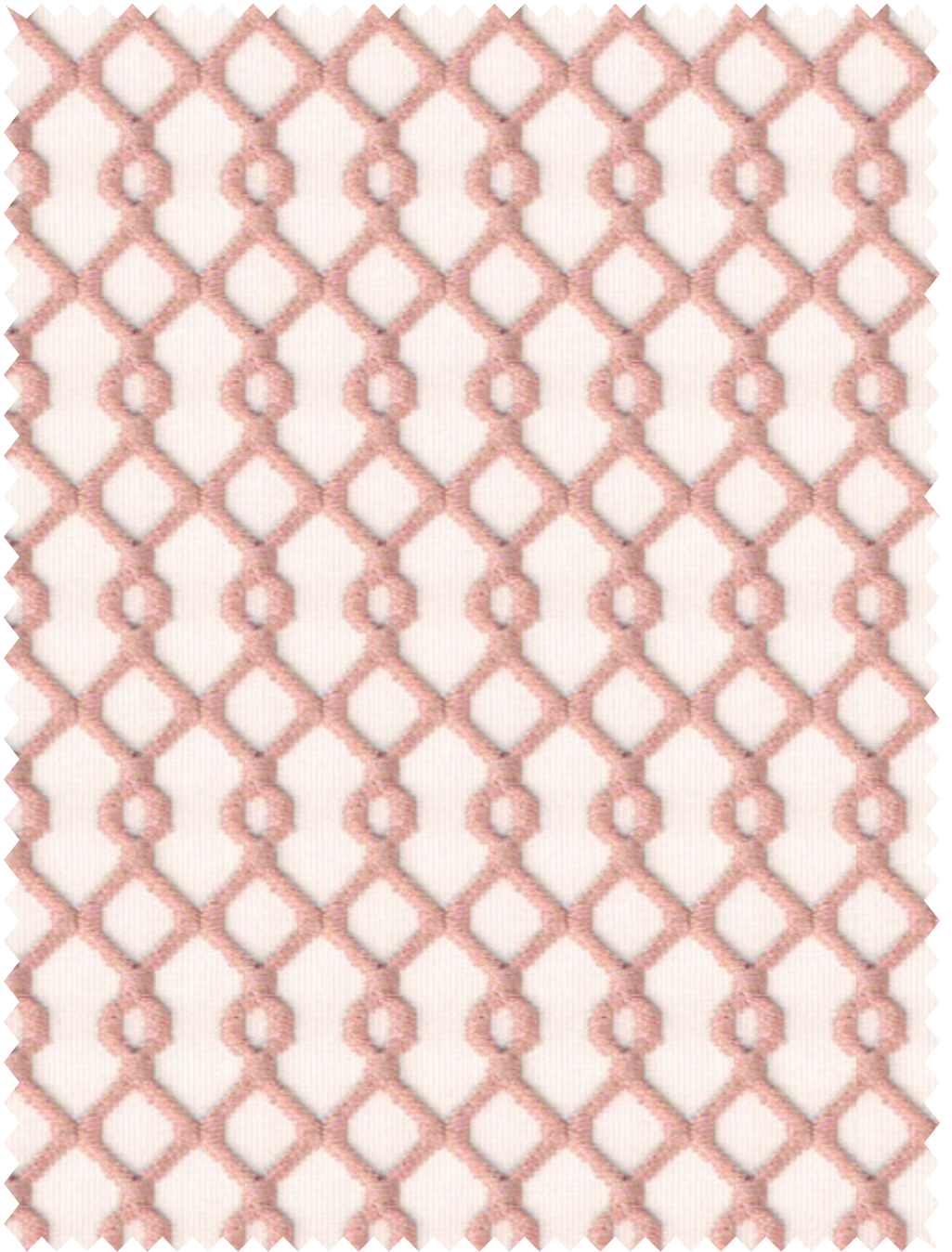
Sr. No. : 362

Usable Fabric Width : 48"/122 cms
Composition : POLY NETT , GSM : 100
Colour shades may slightly vary from dye-lot to dye-lot
Wash :  End Use : 

Price Code : B

For more info, scan:





Collection : SNOW

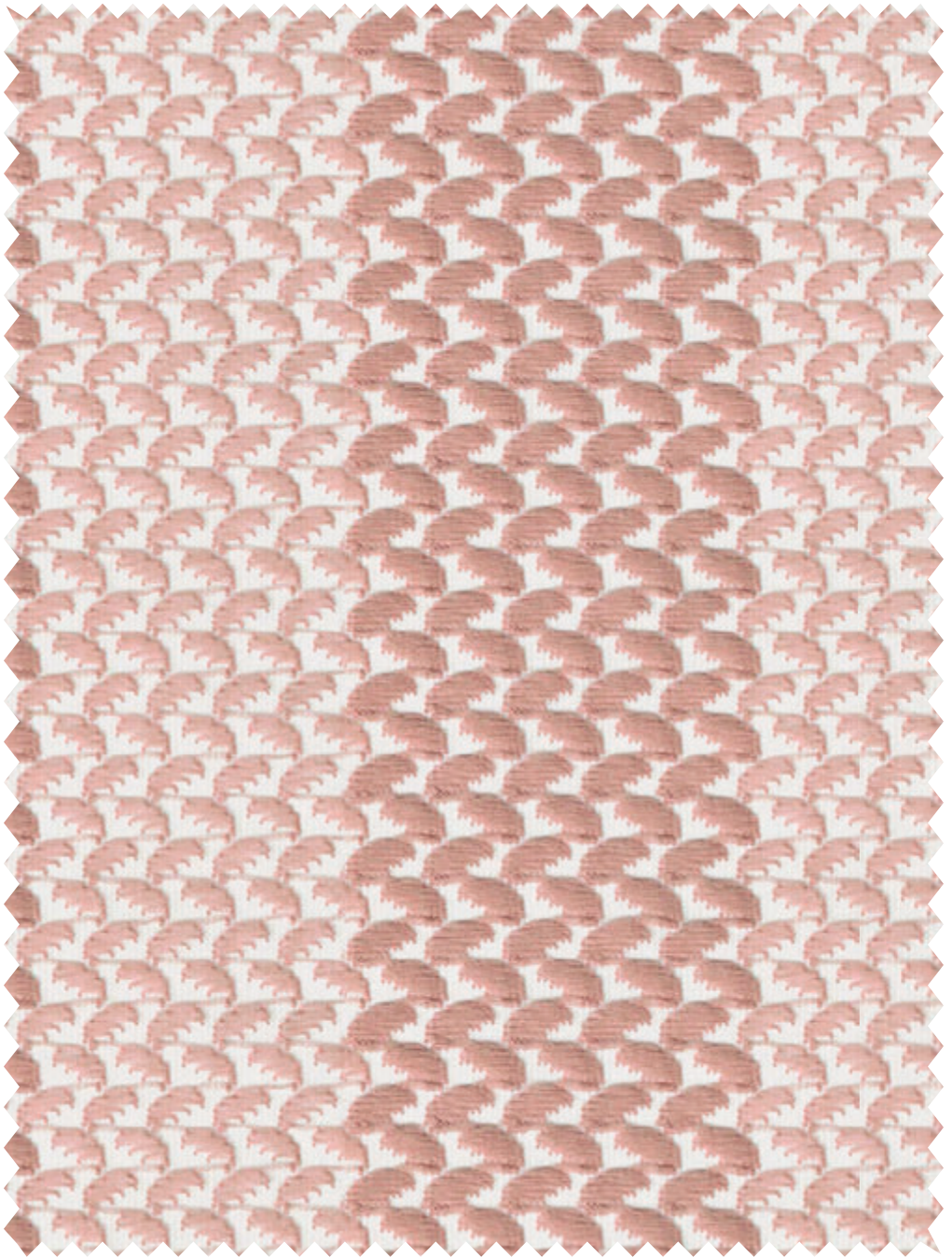
Sr. No. : 363

Usable Fabric Width : 48"/122 cms
Composition : POLY NETT , GSM : 100
Colour shades may slightly vary from dye-lot to dye-lot
Wash : 30°C 30°C 30°C End Use : 30°C

Price Code : B

For more info , scan:





Collection : SNOW

Sr. No. : 364

Usable Fabric Width : 48"/122 cms
Composition : POLY NETT , GSM : 100
Colour shades may slightly vary from dye-lot to dye-lot
Wash : 30°C 30°C 30°C End Use : 30°C

Price Code : B



For more info , scan:





Collection : SNOW

Sr. No. : 365

Usable Fabric Width : 48"/122 cms
Composition : 100% Polyester , GSM : 200
Colour shades may slightly vary from dye-lot to dye-lot
Wash :  End Use : 

Price Code : A

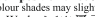
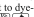
For more info , scan:





Collection : SNOW

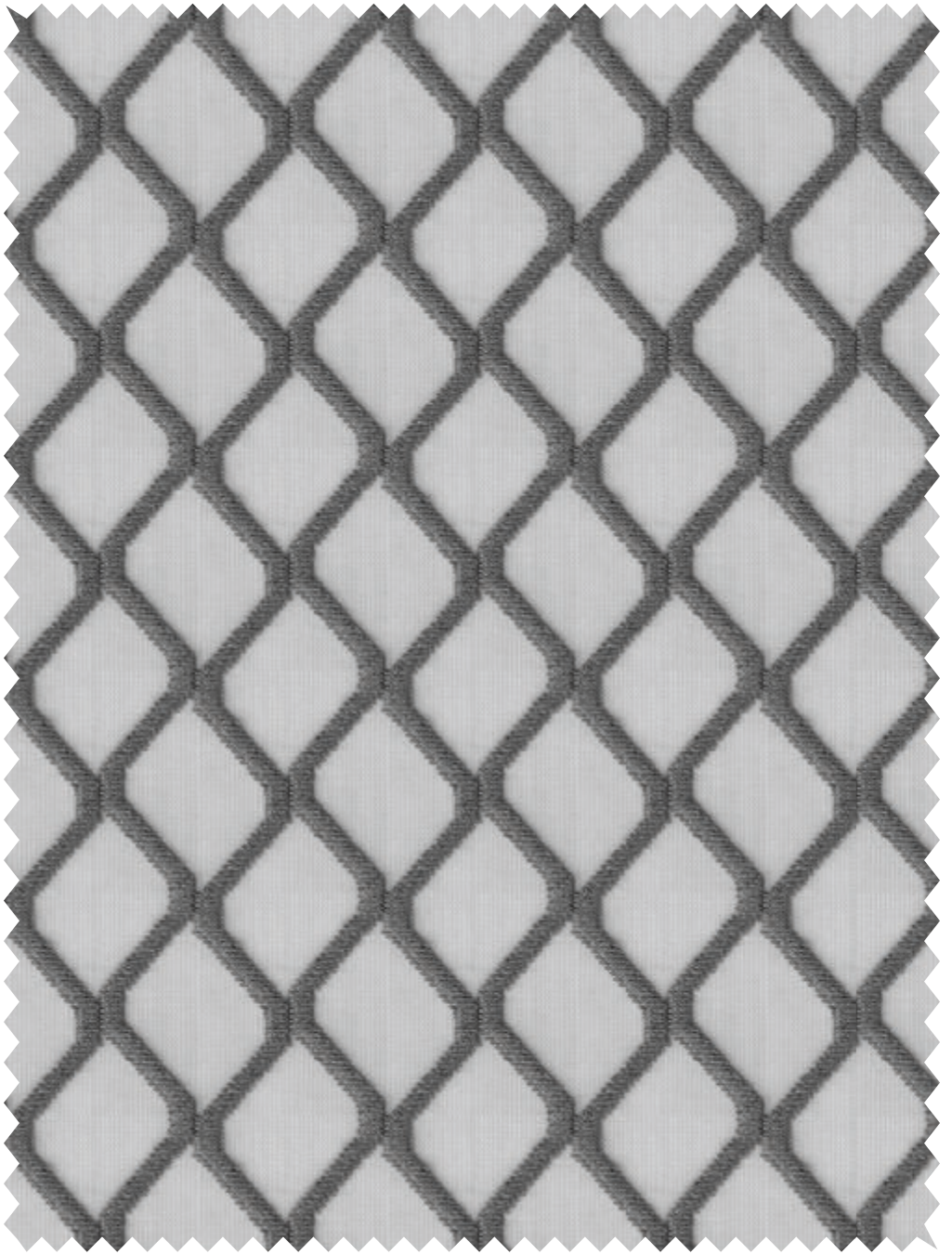
Sr. No. : 366

Usable Fabric Width : 48"/122 cms
Composition : 100% Polyester , GSM : 200
Colour shades may slightly vary from dye-lot to dye-lot
Wash :  End Use : 

Price Code : A

For more info , scan:





Collection : SNOW

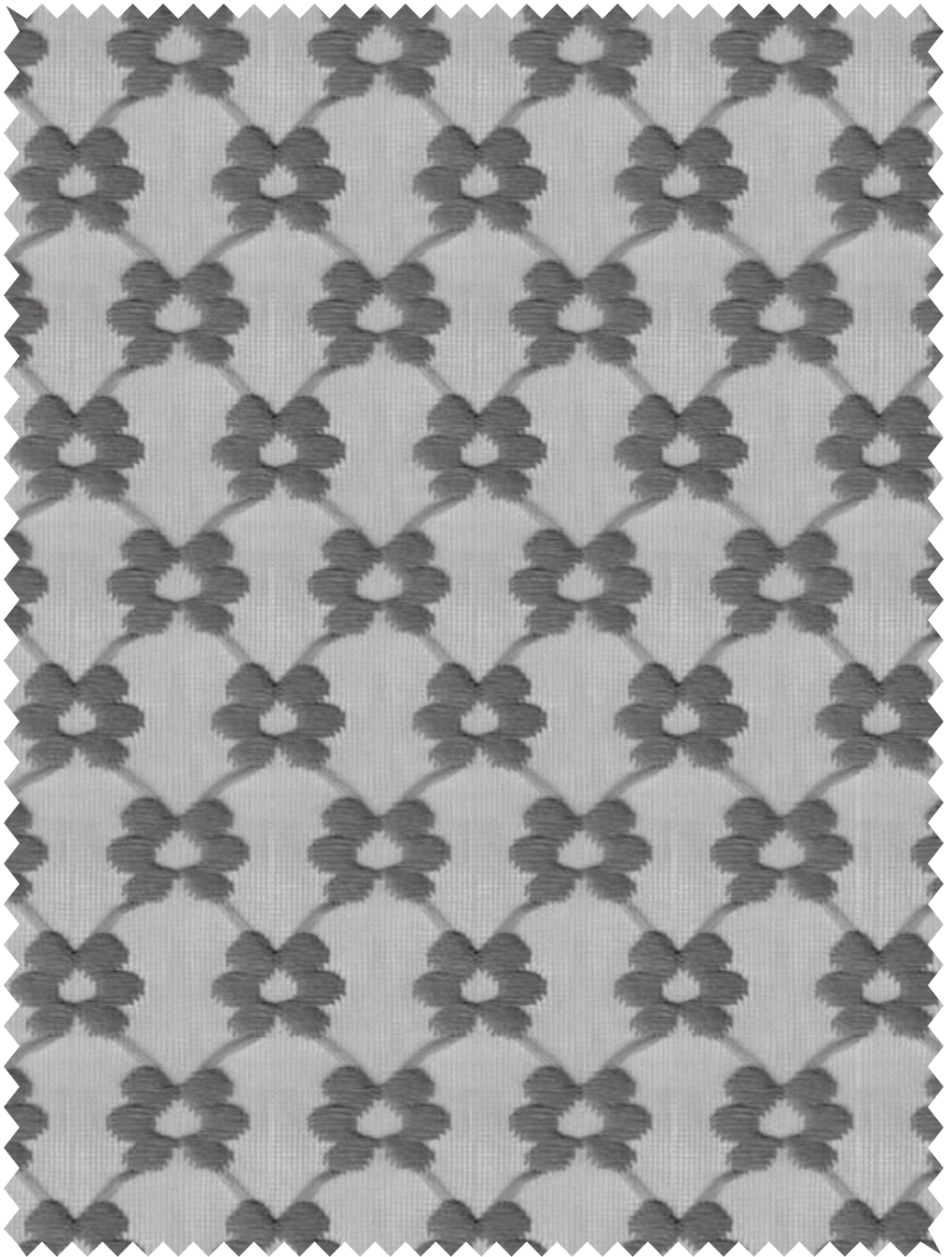
Sr. No. : 367

Usable Fabric Width : 48"/122 cms
Composition : POLY NETT , GSM : 100
Colour shades may slightly vary from dye-lot to dye-lot
Wash :  End Use : 

Price Code : B

For more info, scan:





Collection : SNOW

Sr. No. : 368

Usable Fabric Width : 48"/122 cms
Composition : POLY NETT , GSM : 100
Colour shades may slightly vary from dye-lot to dye-lot
Wash : 30°C 30°C 30°C End Use : 30°C

Price Code : B

For more info , scan:





Collection : SNOW

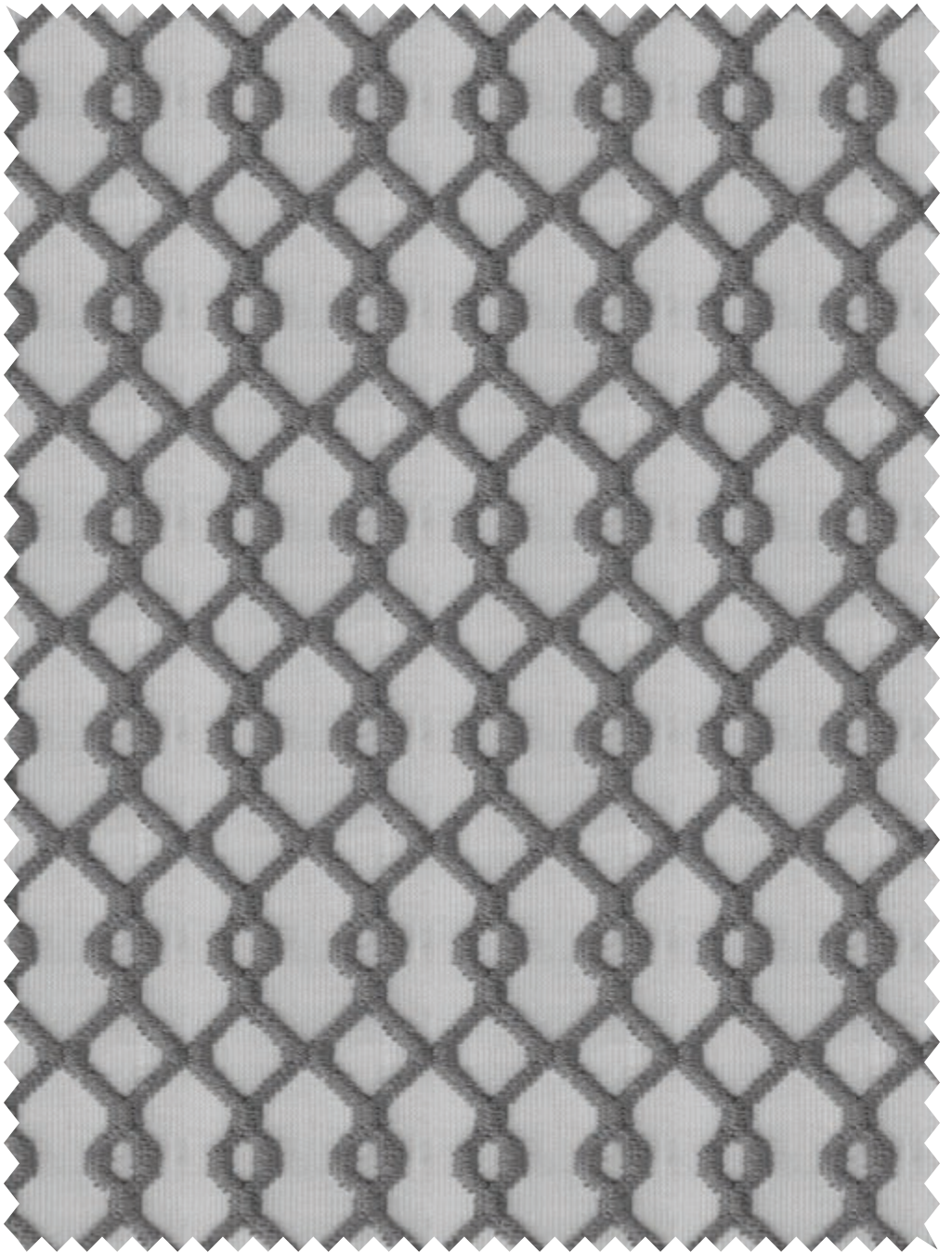
Sr. No. : 369

Usable Fabric Width : 48"/122 cms
Composition : POLY NETT , GSM : 100
Colour shades may slightly vary from dye-lot to dye-lot
Wash :     End Use : 

Price Code : B

For more info, scan:





Collection : SNOW

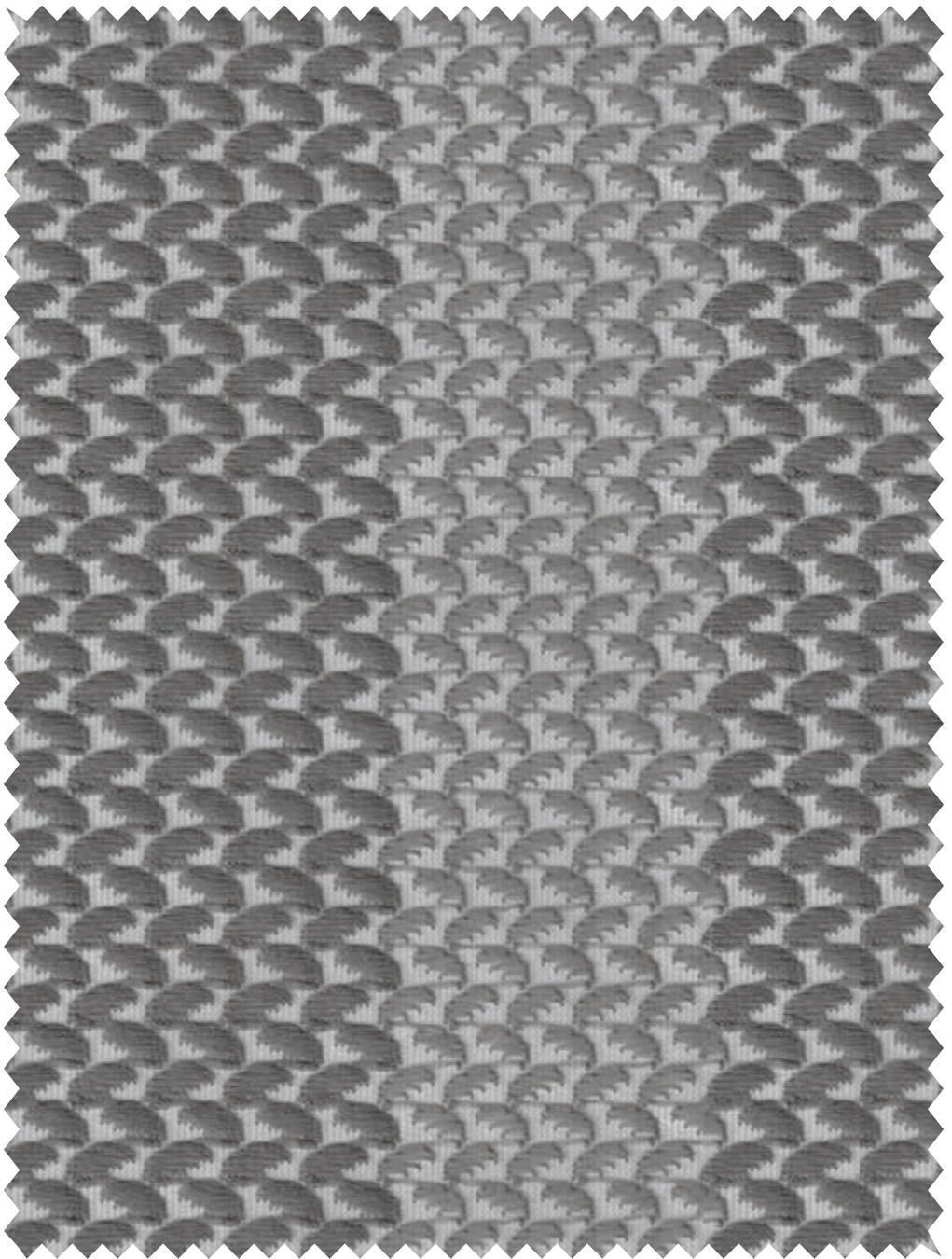
Sr. No. : 370

Usable Fabric Width : 48"/122 cms
Composition : POLY NETT , GSM : 100
Colour shades may slightly vary from eye-lot to dye-lot
Wash :  End Use : 

Price Code : B

For more info , scan:





Collection : SNOW

Sr. No. : 371

Usable Fabric Width : 48"/122 cms
Composition : POLY NETT , GSM : 100
Colour shades may slightly vary from dye-lot to dye-lot
Wash :  End Use : 

Price Code : B



For more info , scan:





Collection : SNOW

Sr. No. : 372

Usable Fabric Width : 48"/122 cms
Composition : 100% Polyester , GSM : 200
Colour shades may slightly vary from dye-lot to dye-lot
Wash :  End Use : 

Price Code : A



For more info , scan:





Collection : SNOW

Sr. No. : 373

Usable Fabric Width : 48"/122 cms
Composition : 100% Polyester , GSM : 200
Colour shades may slightly vary from dye-lot to dye-lot
Wash :  End Use : 

Price Code : A

For more info , scan:





Collection : SNOW

Sr. No. : 374

Usable Fabric Width : 48"/122 cms
Composition : POLY NETT , GSM : 100
Colour shades may slightly vary from dye-lot to dye-lot
Wash : 30°C 30 min End Use : 25

Price Code : B

For more info , scan:





Collection : SNOW

Sr. No. : 375

Usable Fabric Width : 48"/122 cms
Composition : POLY NETT , GSM : 100
Colour shades may slightly vary from dye-lot to dye-lot
Wash : 30°C 30 min End Use : 25

Price Code : B

For more info, scan:





Collection : SNOW

Sr. No. : 376

Usable Fabric Width : 48"/122 cms
Composition : POLY NETT , GSM : 100
Colour shades may slightly vary from dye-lot to dye-lot
Wash :  End Use : 

Price Code : B

For more info , scan:





Collection : SNOW

Sr. No. : 377

Usable Fabric Width : 48"/122 cms
Composition : POLY NETT , GSM : 100
Colour shades may slightly vary from dye-lot to dye-lot
Wash : 30°C 30°C 30°C End Use : 30°C

Price Code : B

For more info , scan:





Collection : SNOW

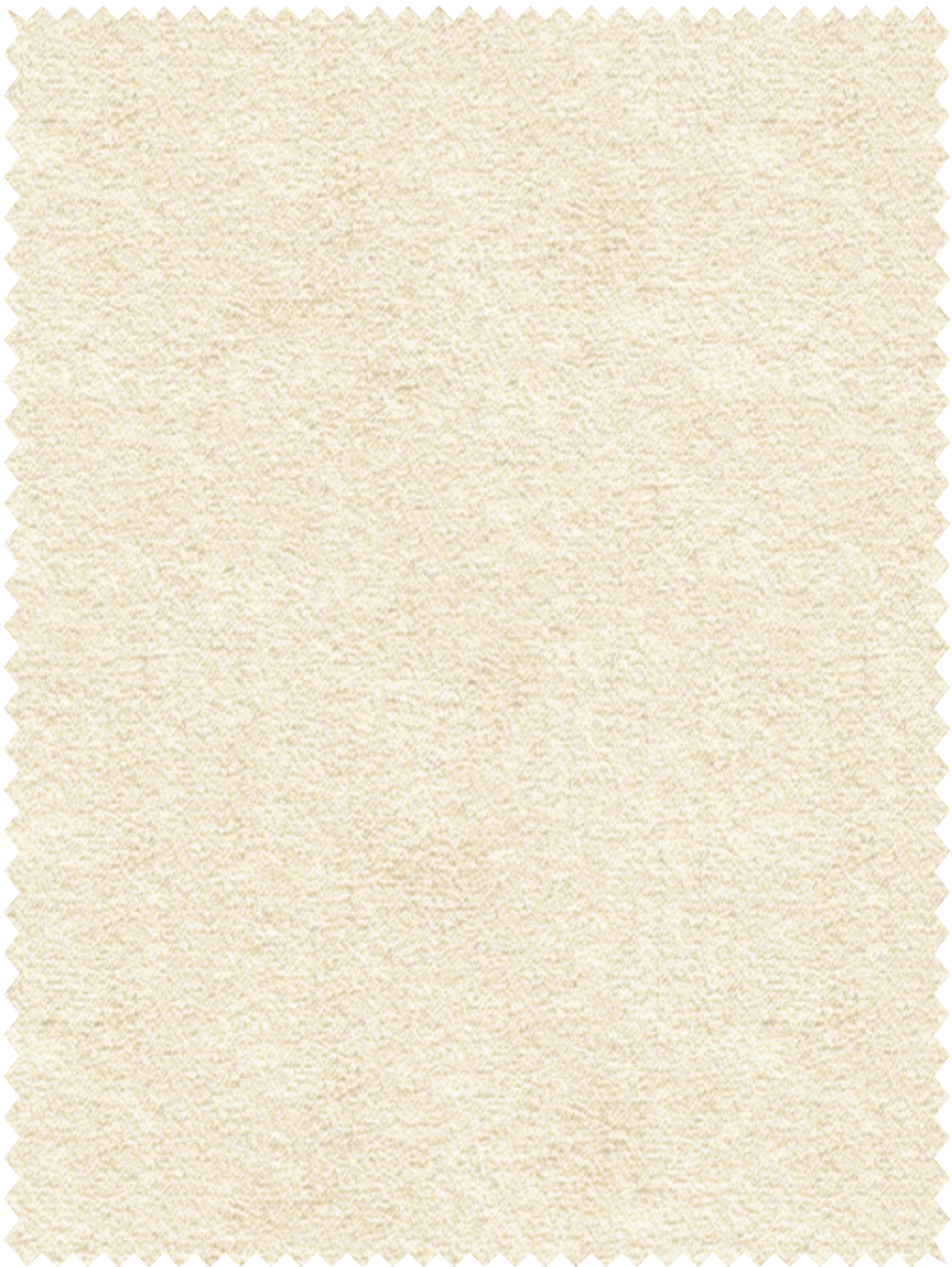
Sr. No. : 378

Usable Fabric Width : 48"/122 cms
Composition : POLY NETT , GSM : 100
Colour shades may slightly vary from dye-lot to dye-lot
Wash : 30°C End Use : 25

Price Code : B


For more info , scan:





Collection : SNOW

Sr. No. : 379

Usable Fabric Width : 48"/122 cms
Composition : 100% Polyester , GSM : 200
Colour shades may slightly vary from dye-lot to dye-lot
Wash :  End Use : 

Price Code : A


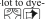
For more info , scan:





Collection : SNOW

Sr. No. : 380

Usable Fabric Width : 48"/122 cms
Composition : 100% Polyester , GSM : 200
Colour shades may slightly vary from dye-lot to dye-lot
Wash :  End Use : 

Price Code : A

For more info , scan:





Collection : SNOW

Sr. No. : 381

Usable Fabric Width : 48"/122 cms
Composition : POLY NETT , GSM : 100
Colour shades may slightly vary from dye-lot to dye-lot
Wash : 30°C 30°C 30°C End Use : 30°C

Price Code : B

For more info , scan:





Collection : SNOW

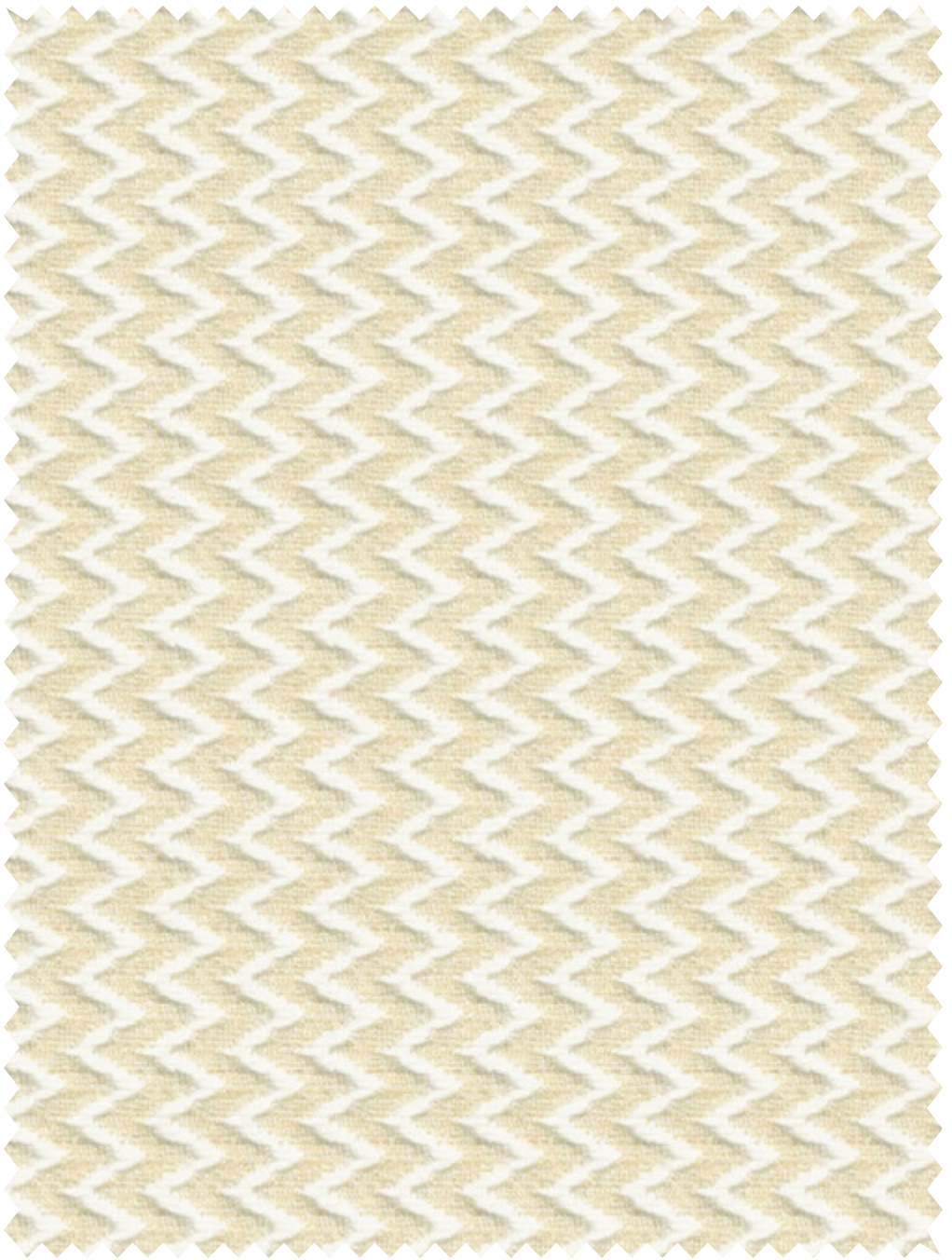
Sr. No. : 382

Usable Fabric Width : 48"/122 cms
Composition : POLY NETT , GSM : 100
Colour shades may slightly vary from dye-lot to dye-lot
Wash : 30°C 30 min End Use : 30

Price Code : B

For more info , scan:





Collection : SNOW

Sr. No. : 383

Usable Fabric Width : 48"/122 cms
Composition : POLY NETT , GSM : 100
Colour shades may slightly vary from dye-lot to dye-lot
Wash : 30°C 30°C 30°C End Use : 30°C

Price Code : B

For more info, scan:





Collection : SNOW

Sr. No. : 384

Usable Fabric Width : 48"/122 cms
Composition : POLY NETT , GSM : 100
Colour shades may slightly vary from dye-lot to dye-lot
Wash : 30°C 30°C 30°C End Use : 30°C

Price Code : B

For more info , scan:





Collection : SNOW

Sr. No. : 385

Usable Fabric Width : 48"/122 cms
Composition : POLY NETT , GSM : 100
Colour shades may slightly vary from dye-lot to dye-lot
Wash : 30°C 30°C 30°C End Use : 30°C

Price Code : B


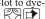
For more info, scan:





Collection : SNOW

Sr. No. : 386

Usable Fabric Width : 48"/122 cms
Composition : 100% Polyester , GSM : 200
Colour shades may slightly vary from dye-lot to dye-lot
Wash :  End Use : 

Price Code : A



For more info , scan:





Collection : SNOW

Sr. No. : 387

Usable Fabric Width : 48"/122 cms
Composition : 100% Polyester , GSM : 200
Colour shades may slightly vary from dye-lot to dye-lot
Wash :  End Use : 

Price Code : A

For more info , scan:





Collection : SNOW

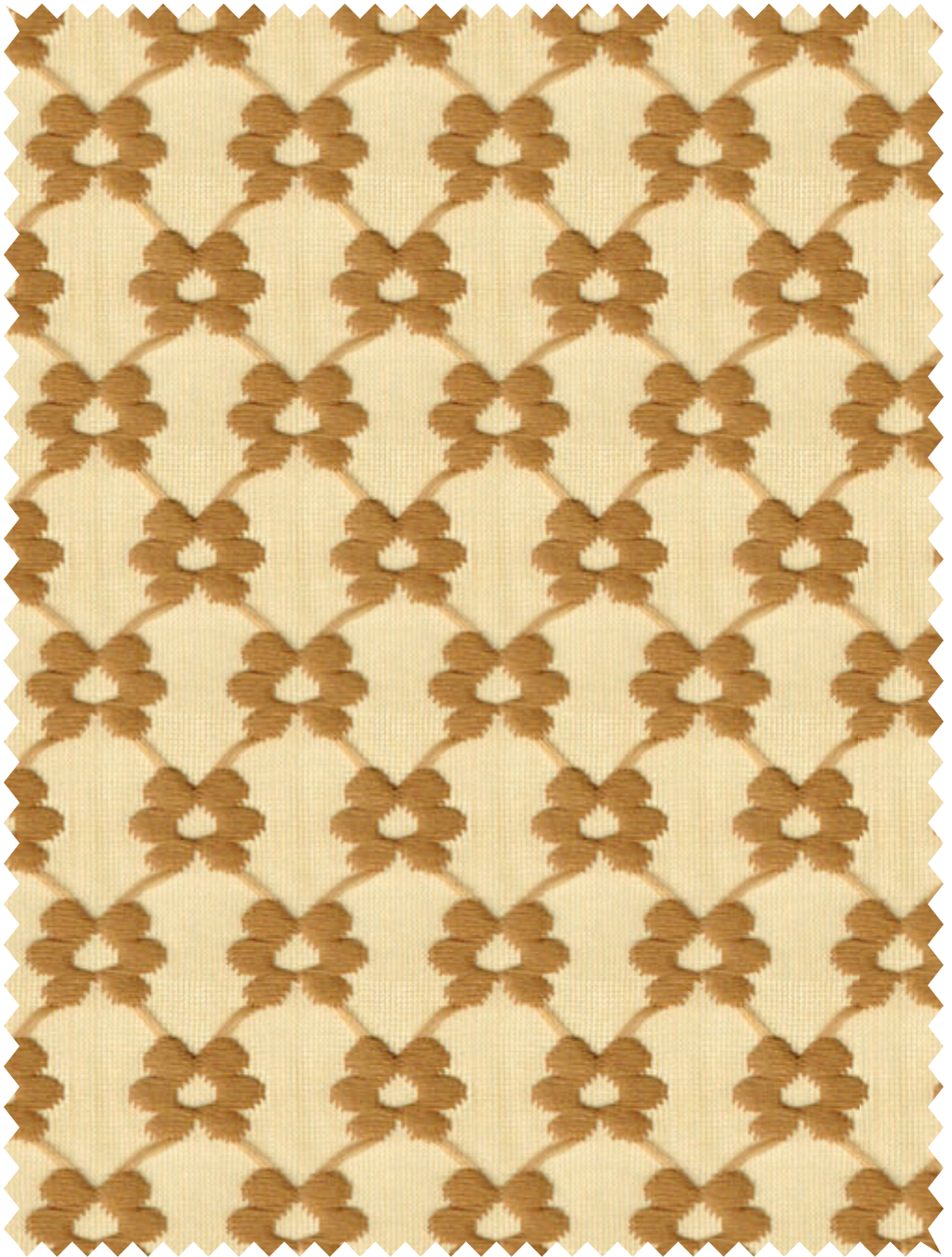
Sr. No. : 388

Usable Fabric Width : 48"/122 cms
Composition : POLY NETT , GSM : 100
Colour shades may slightly vary from dye-lot to dye-lot
Wash :  End Use : 

Price Code : B

For more info, scan:





Collection : SNOW

Sr. No. : 389

Usable Fabric Width : 48"/122 cms
Composition : POLY NETT , GSM : 100
Colour shades may slightly vary from dye-lot to dye-lot
Wash :  End Use : 

Price Code : B

For more info , scan:





Collection : SNOW

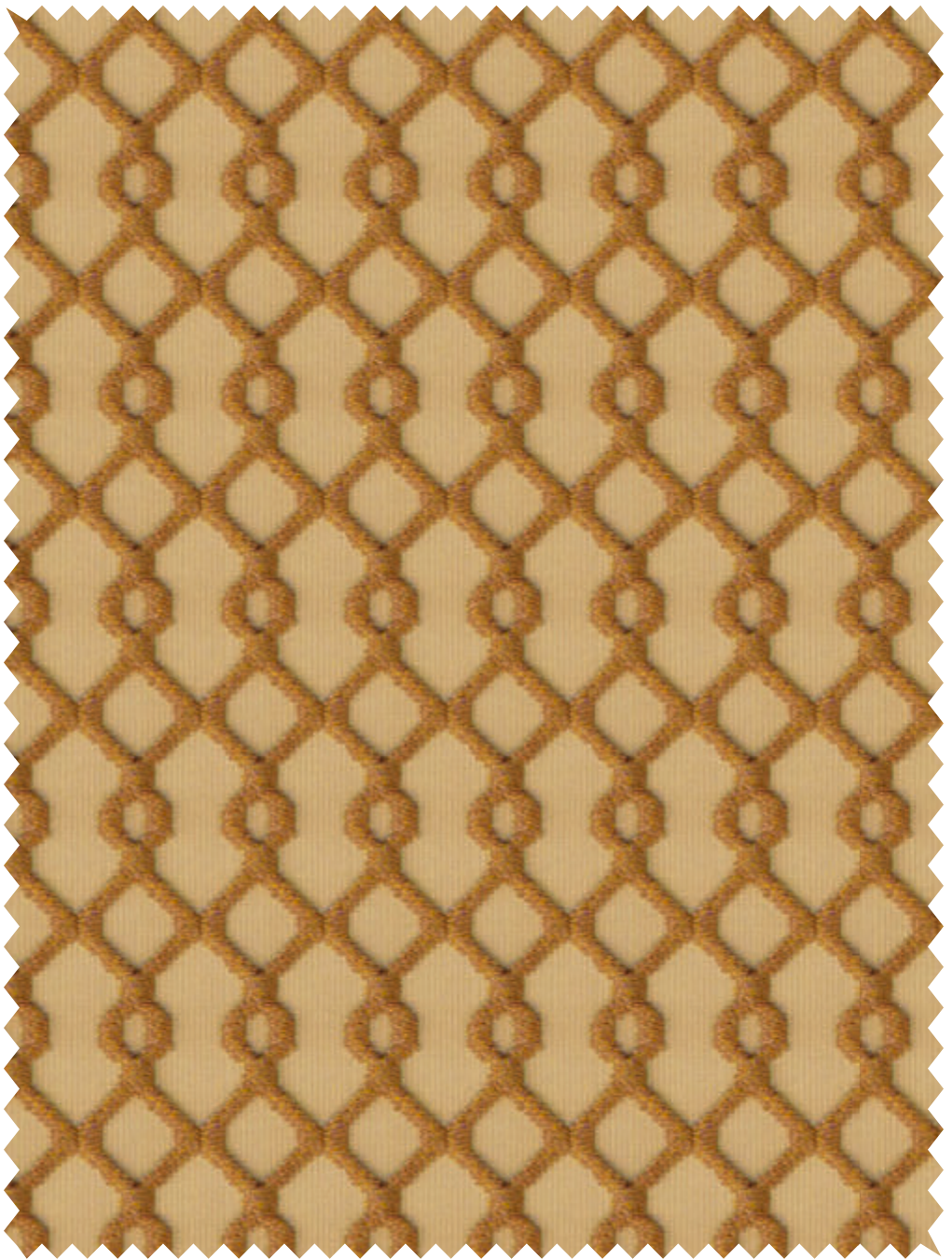
Sr. No. : 390

Usable Fabric Width : 48"/122 cms
Composition : POLY NETT , GSM : 100
Colour shades may slightly vary from dye-lot to dye-lot
Wash :  End Use : 

Price Code : B

For more info , scan:





Collection : SNOW

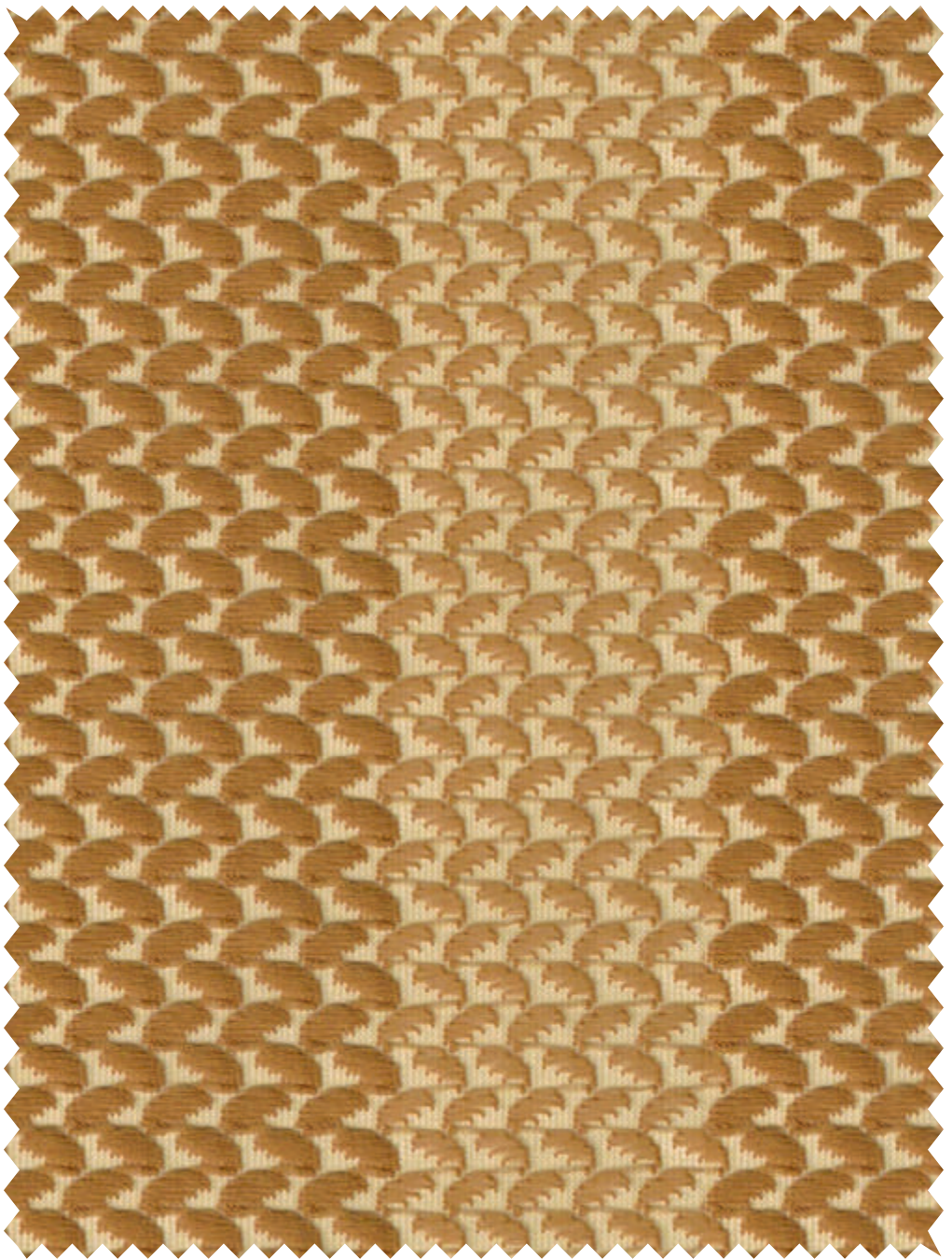
Sr. No. : 391

Usable Fabric Width : 48"/122 cms
Composition : POLY NETT , GSM : 100
Colour shades may slightly vary from dye-lot to dye-lot
Wash : 30°C 30°C 30°C End Use : 30°C

Price Code : B

For more info , scan:





Collection : SNOW

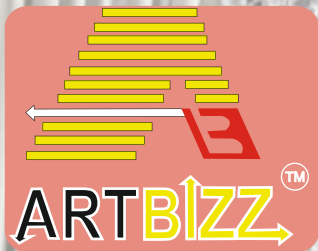
Sr. No. : 392

Usable Fabric Width : 48"/122 cms
Composition : POLY NETT , GSM : 100
Colour shades may slightly vary from dye-lot to dye-lot
Wash :  End Use : 

Price Code : B

For more info , scan:





SNOW

| COLLECTION | DESIGN | IMAGE | SKU | WIDTH | COMPOSITION | GSM | END USE | REPEAT | |
|------------|--------|-------|-----|-------------|----------------|-----|---------|---------|---------|
| | | | | | | | | u | v |
| SNOW | A | | 06 | 48"/122 cms | 100% Polyester | 200 | | N.A | N.A |
| SNOW | | | 06 | 48"/122 cms | 100% Polyester | 200 | | N.A | N.A |
| SNOW | B | | 06 | 48"/122 cms | Poly Nett | 100 | | 3.3 cms | 3.3 cms |
| SNOW | | | 06 | 48"/122 cms | Poly Nett | 100 | | 3.0 cms | 4.0 cms |
| SNOW | | | 06 | 48"/122 cms | Poly Nett | 100 | | 1.3 cms | 1.3 cms |
| SNOW | | | 06 | 48"/122 cms | Poly Nett | 100 | | 1.8 cms | 3.0 cms |
| SNOW | | | 06 | 48"/122 cms | Poly Nett | 100 | | 9.0 cms | 1.0 cms |

Colour is subjected to lot variation.

Wash :