



NEUTRALS



KIDS
FRIENDLY



BREATHABLE



SOFT
TOUCH



AZRO DYE
FREE





HIGH
PERFORMANCE

NEUTRALS



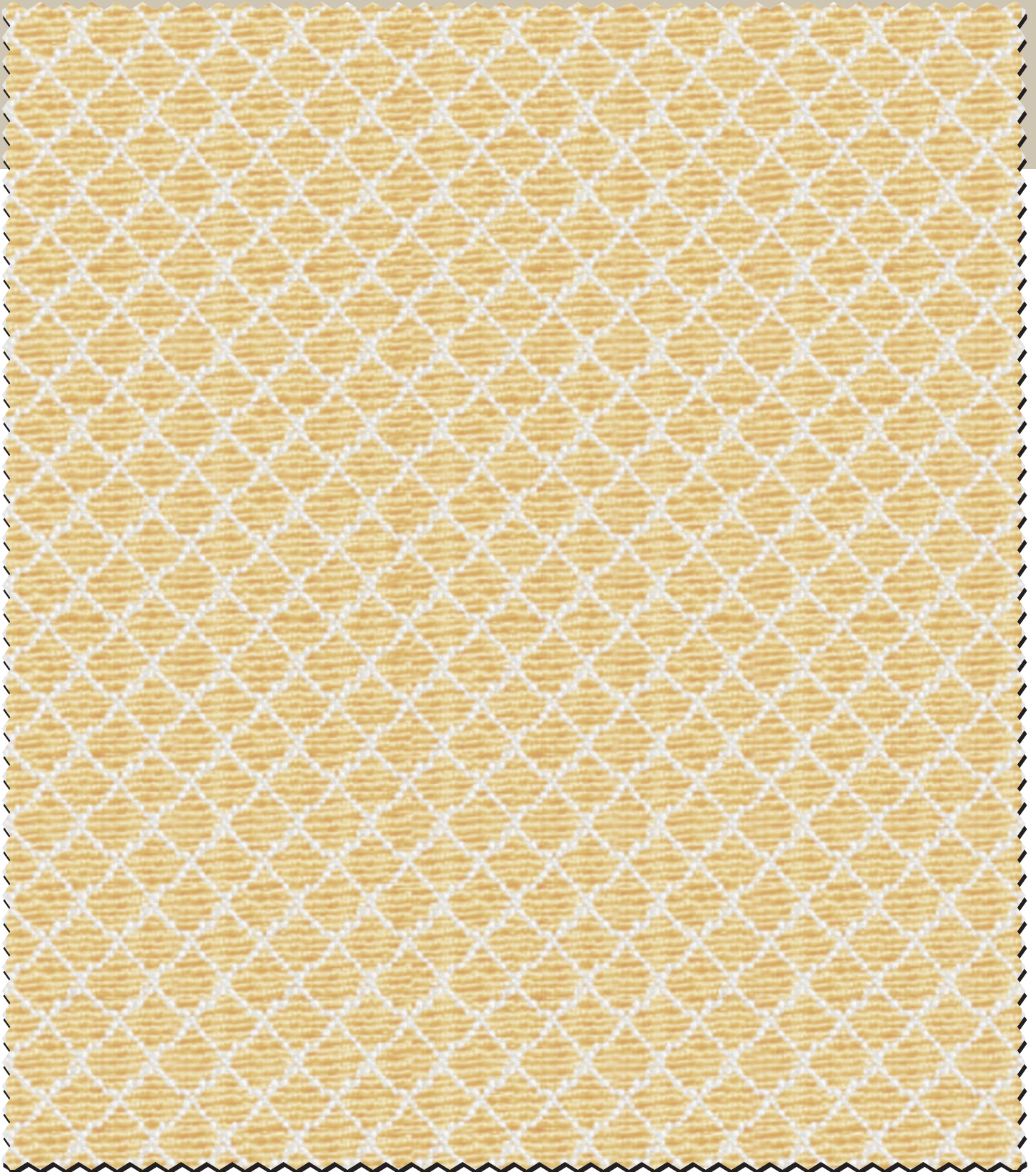



SKU	WIDTH	COMPOSITION	GSM	END USE
24	48"/122 cms	40% Cotton, 60% Poly	260	 

S. No. 01

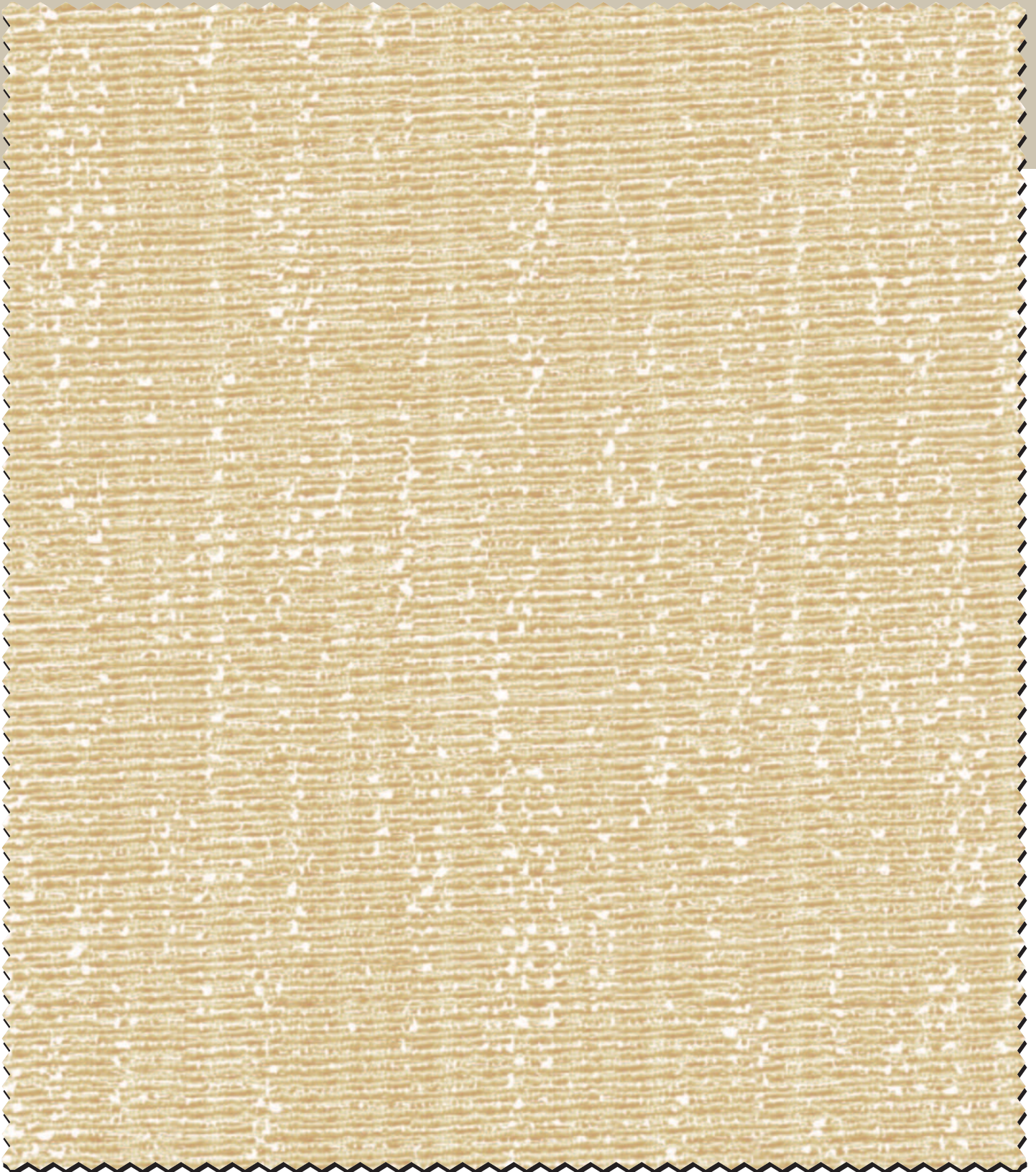




NEUTRALS



SKU	WIDTH	COMPOSITION	GSM	END USE
24	48"/122 cms	40% Cotton, 60% Poly	260	



S. No. 02



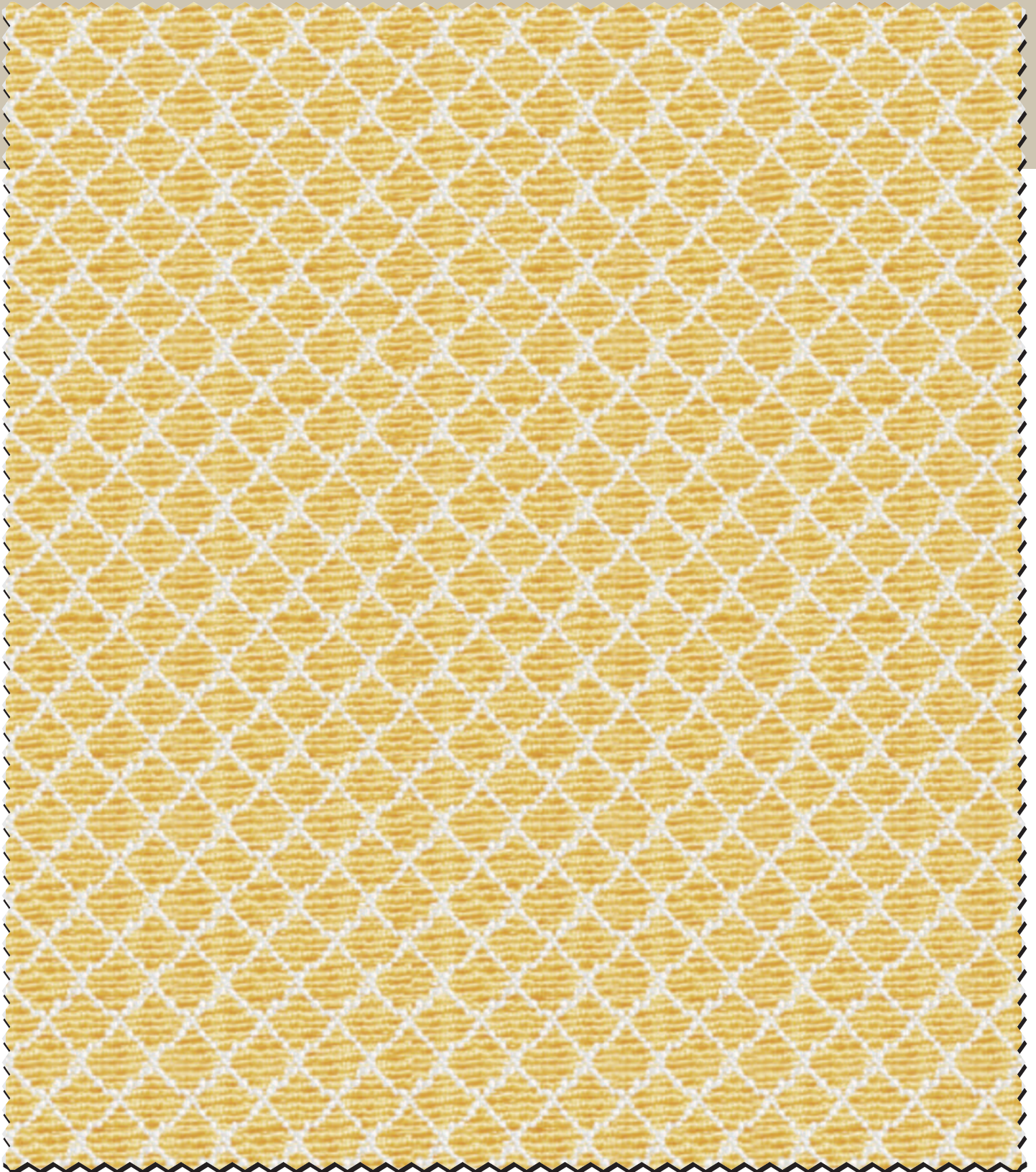
SKU	WIDTH	COMPOSITION	GSM	END USE
24	48"/122 cms	40% Cotton, 60% Poly	260	 



S. No. 03



SKU	WIDTH	COMPOSITION	GSM	END USE
24	48"/122 cms	40% Cotton, 60% Poly	260	 

S. No. 04

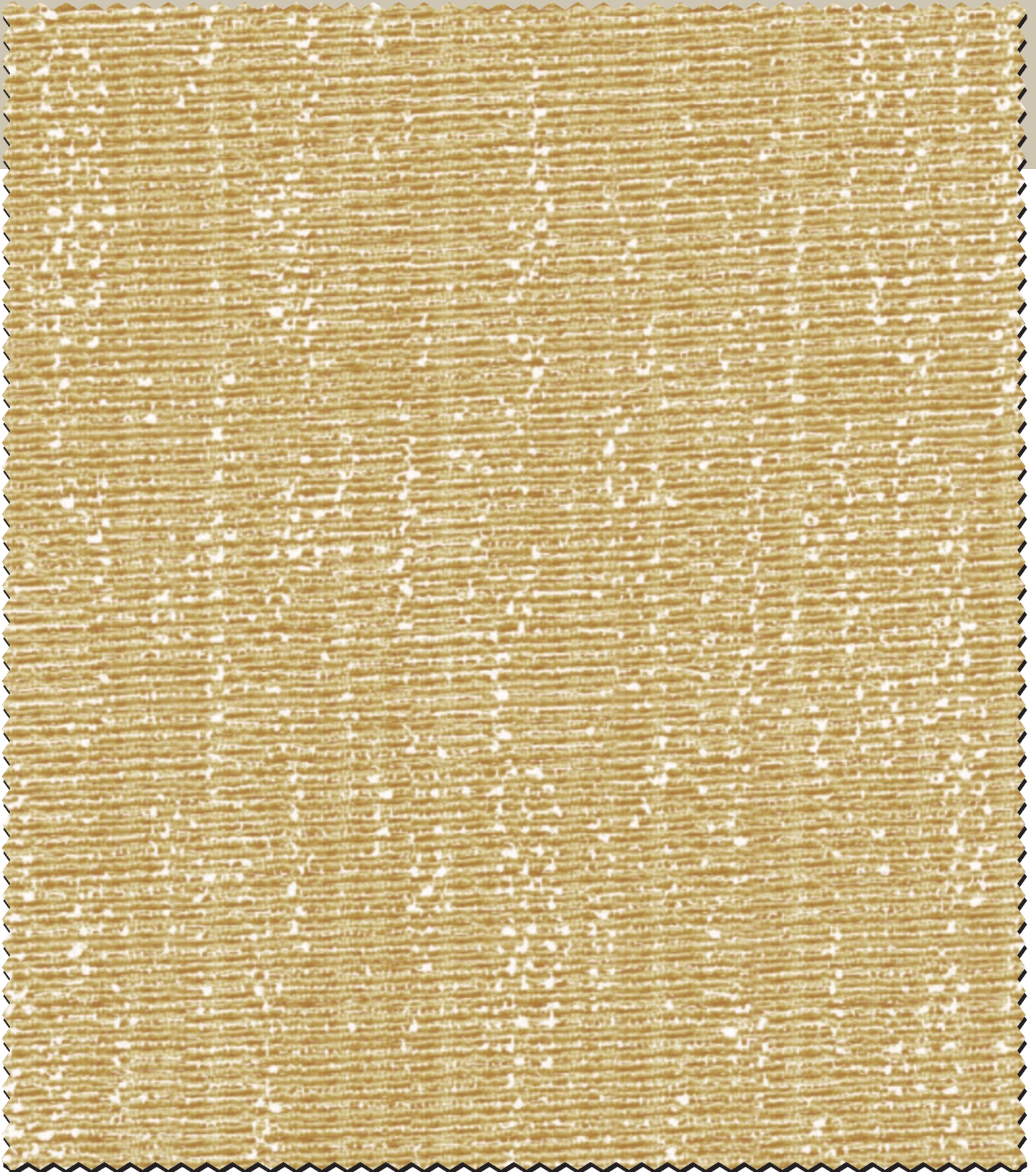



SKU	WIDTH	COMPOSITION	GSM	END USE
24	48"/122 cms	40% Cotton, 60% Poly	260	 

S. No. 05

NEUTRALS





SKU	WIDTH	COMPOSITION	GSM	END USE
24	48"/122 cms	40% Cotton, 60% Poly	260	

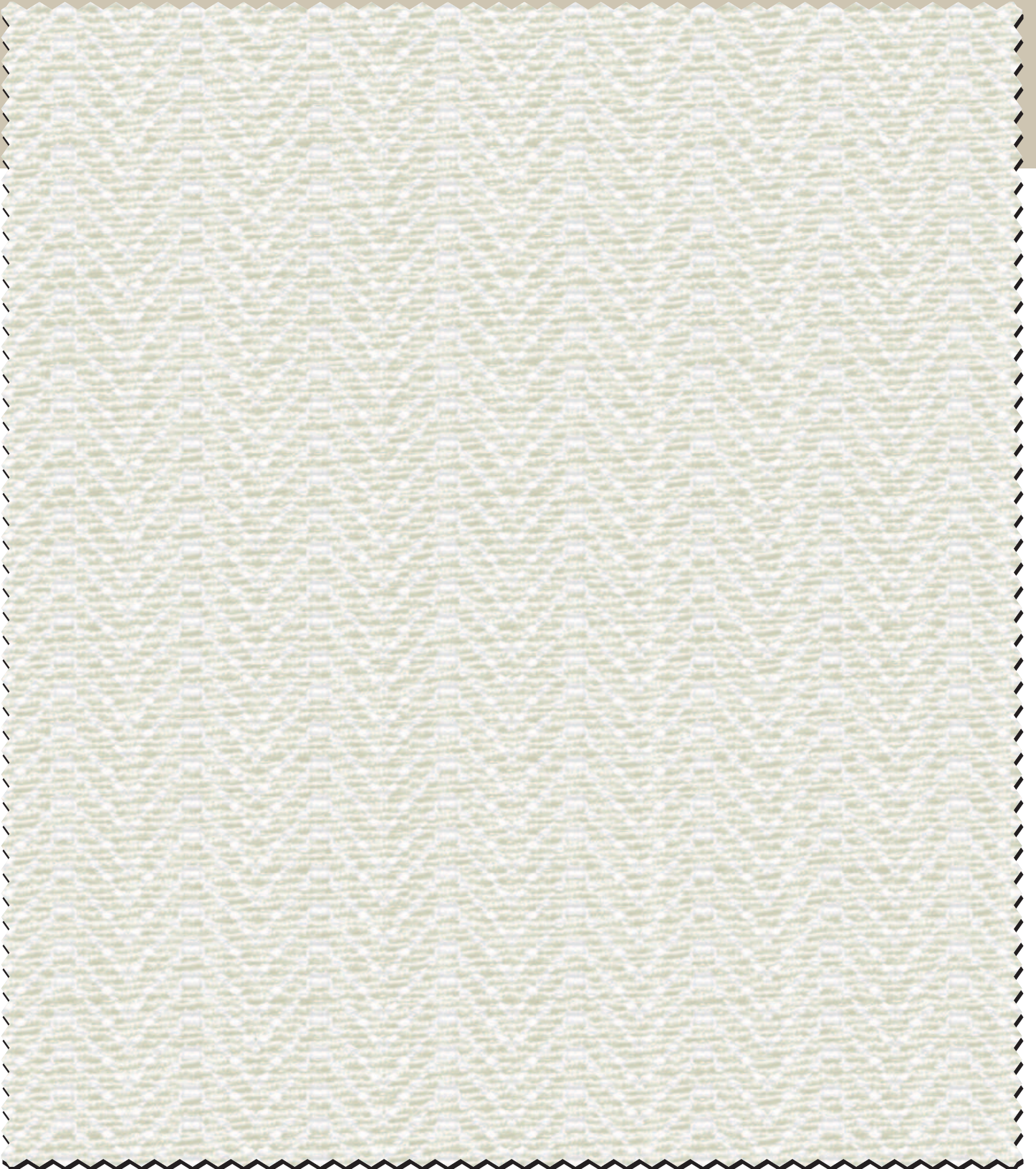
S. No. 06





Scan for E-Catalogue

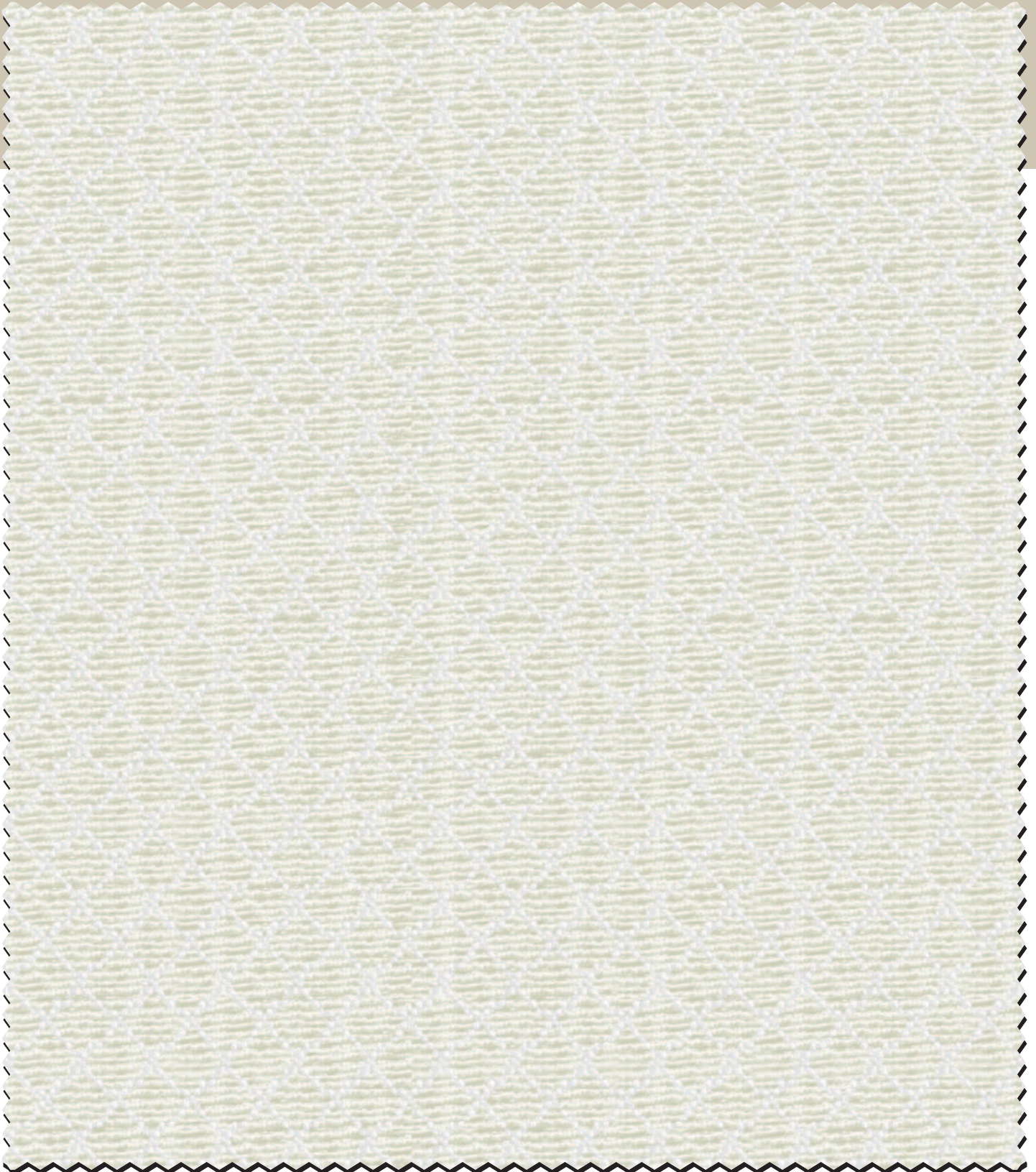



NEUTRALS



SKU	WIDTH	COMPOSITION	GSM	END USE
24	48"/122 cms	40% Cotton, 60% Poly	260	 


S. No. 07



SKU	WIDTH	COMPOSITION	GSM	END USE
24	48"/122 cms	40% Cotton, 60% Poly	260	


S. No. 08



SKU	WIDTH	COMPOSITION	GSM	END USE
24	48"/122 cms	40% Cotton, 60% Poly	260	



S. No. 09



SKU	WIDTH	COMPOSITION	GSM	END USE
24	48"/122 cms	40% Cotton, 60% Poly	260	



S. No. 10




SKU	WIDTH	COMPOSITION	GSM	END USE
24	48"/122 cms	40% Cotton, 60% Poly	260	 

S. No. 11





SKU	WIDTH	COMPOSITION	GSM	END USE
24	48"/122 cms	40% Cotton, 60% Poly	260	 



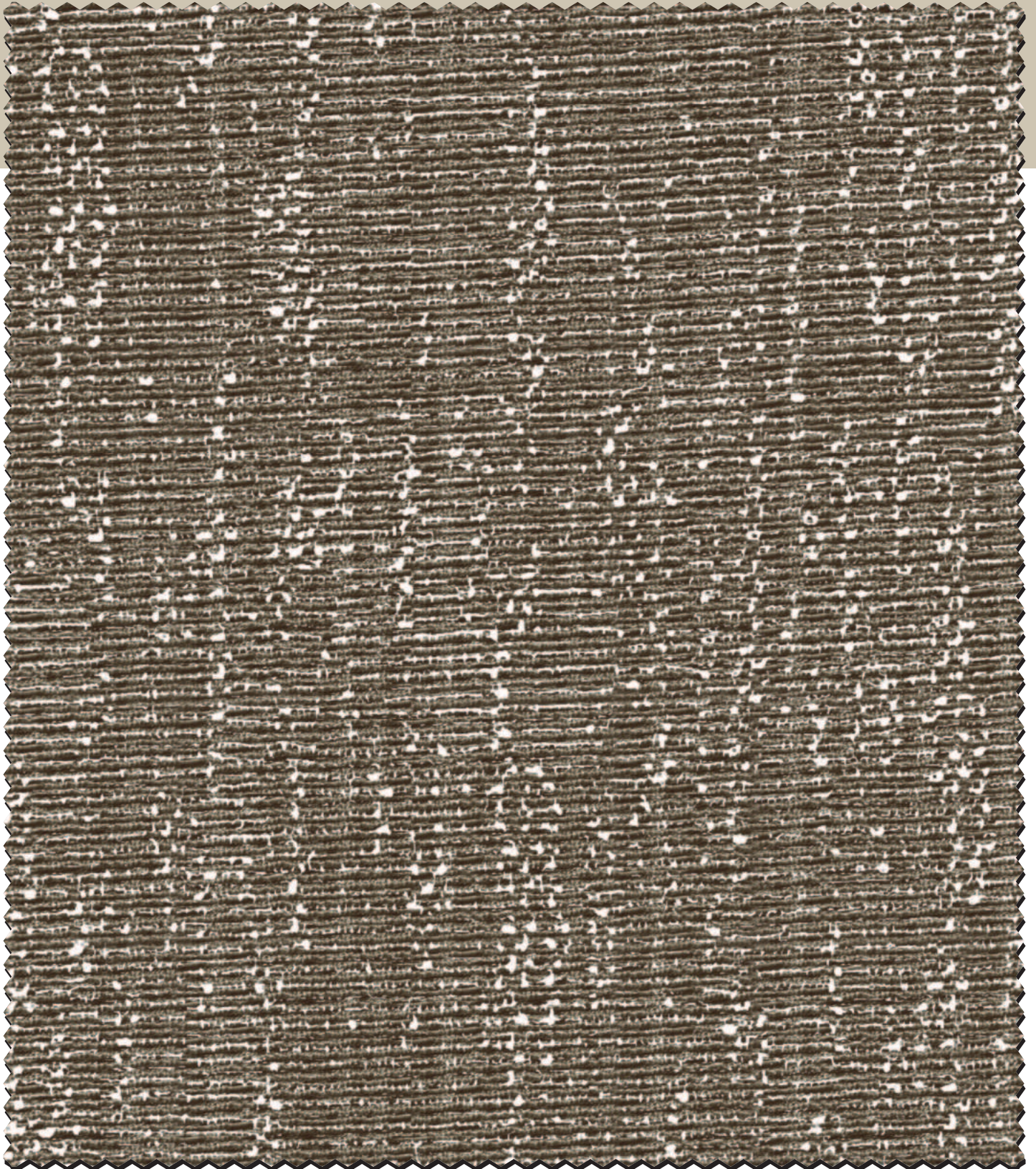
SKU	WIDTH	COMPOSITION	GSM	END USE
24	48"/122 cms	40% Cotton, 60% Poly	260	



S. No. 13





SKU	WIDTH	COMPOSITION	GSM	END USE
24	48"/122 cms	40% Cotton, 60% Poly	260	 

S. No. 14

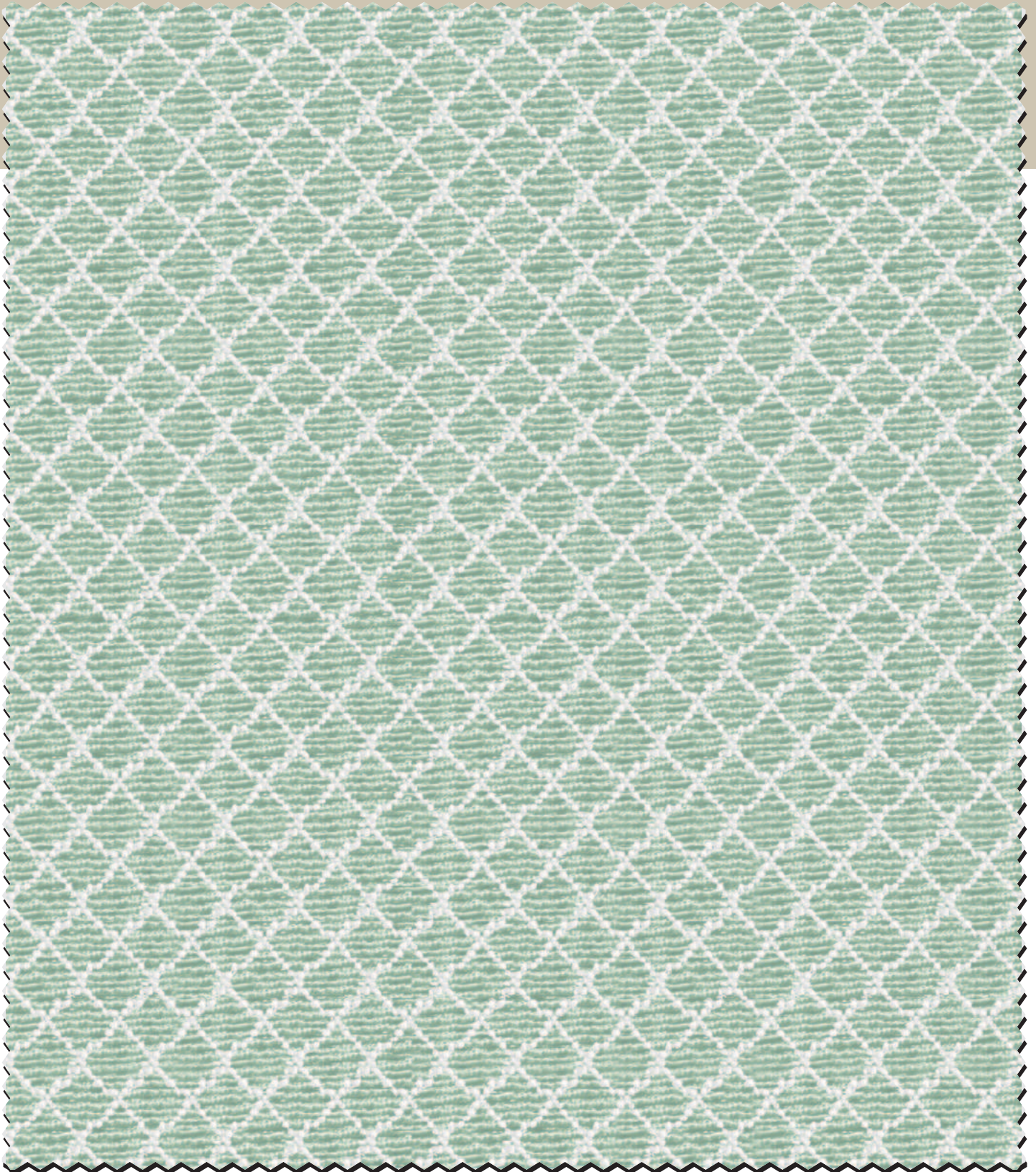




SKU	WIDTH	COMPOSITION	GSM	END USE
24	48"/122 cms	40% Cotton, 60% Poly	260	 



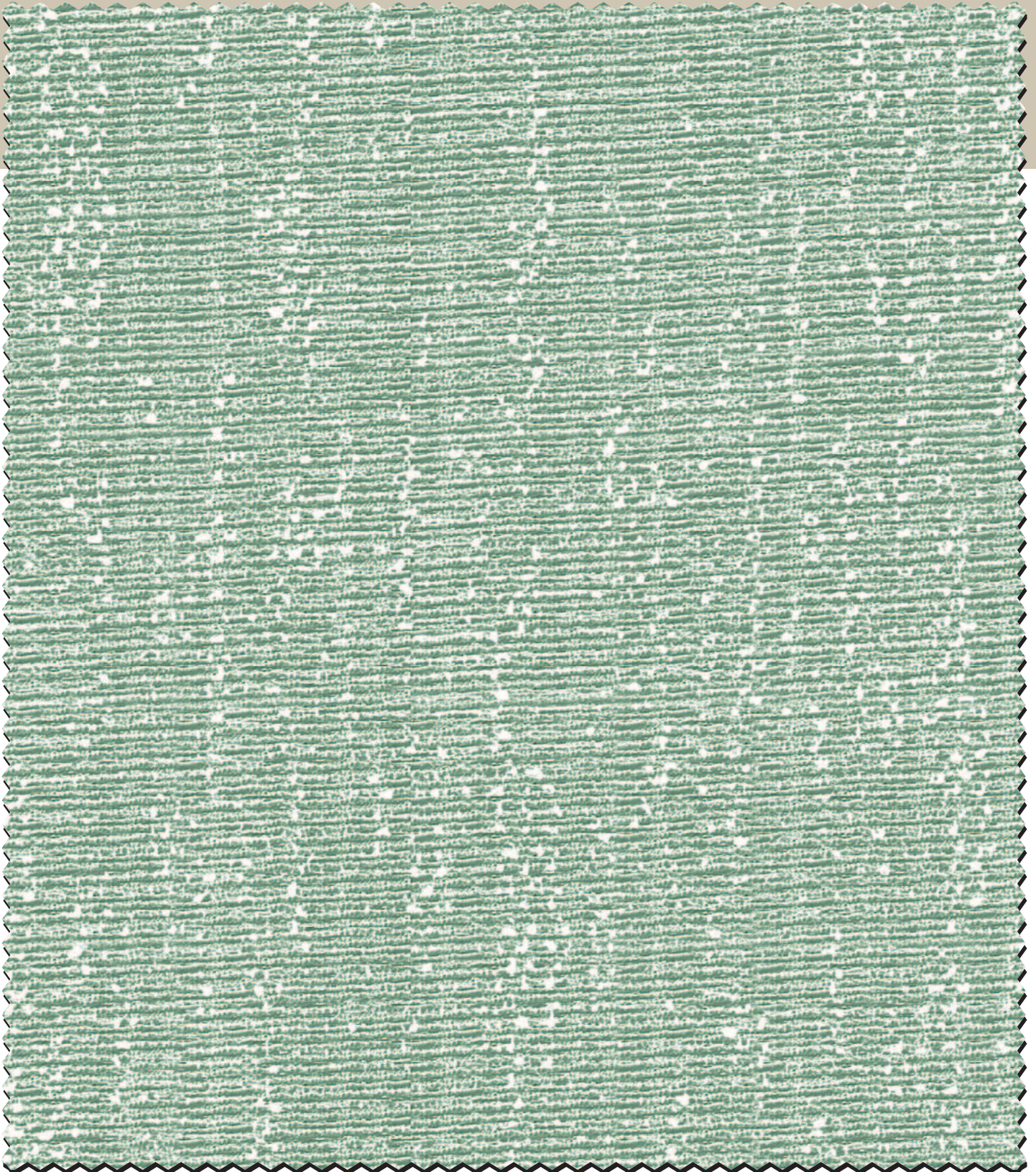
SKU	WIDTH	COMPOSITION	GSM	END USE
24	48"/122 cms	40% Cotton, 60% Poly	260	 


S. No. 16

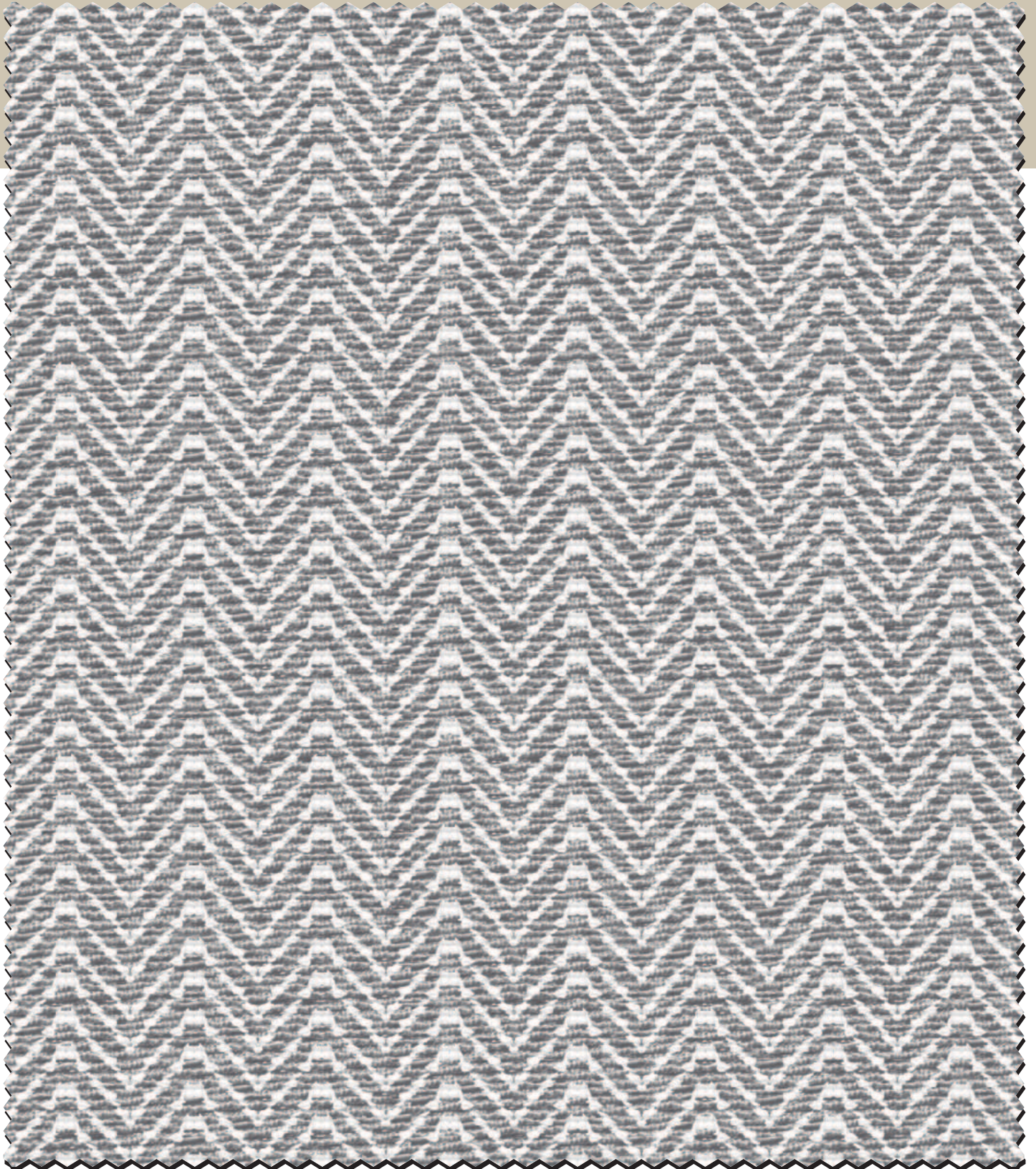



SKU	WIDTH	COMPOSITION	GSM	END USE
24	48"/122 cms	40% Cotton, 60% Poly	260	 

S. No. 17

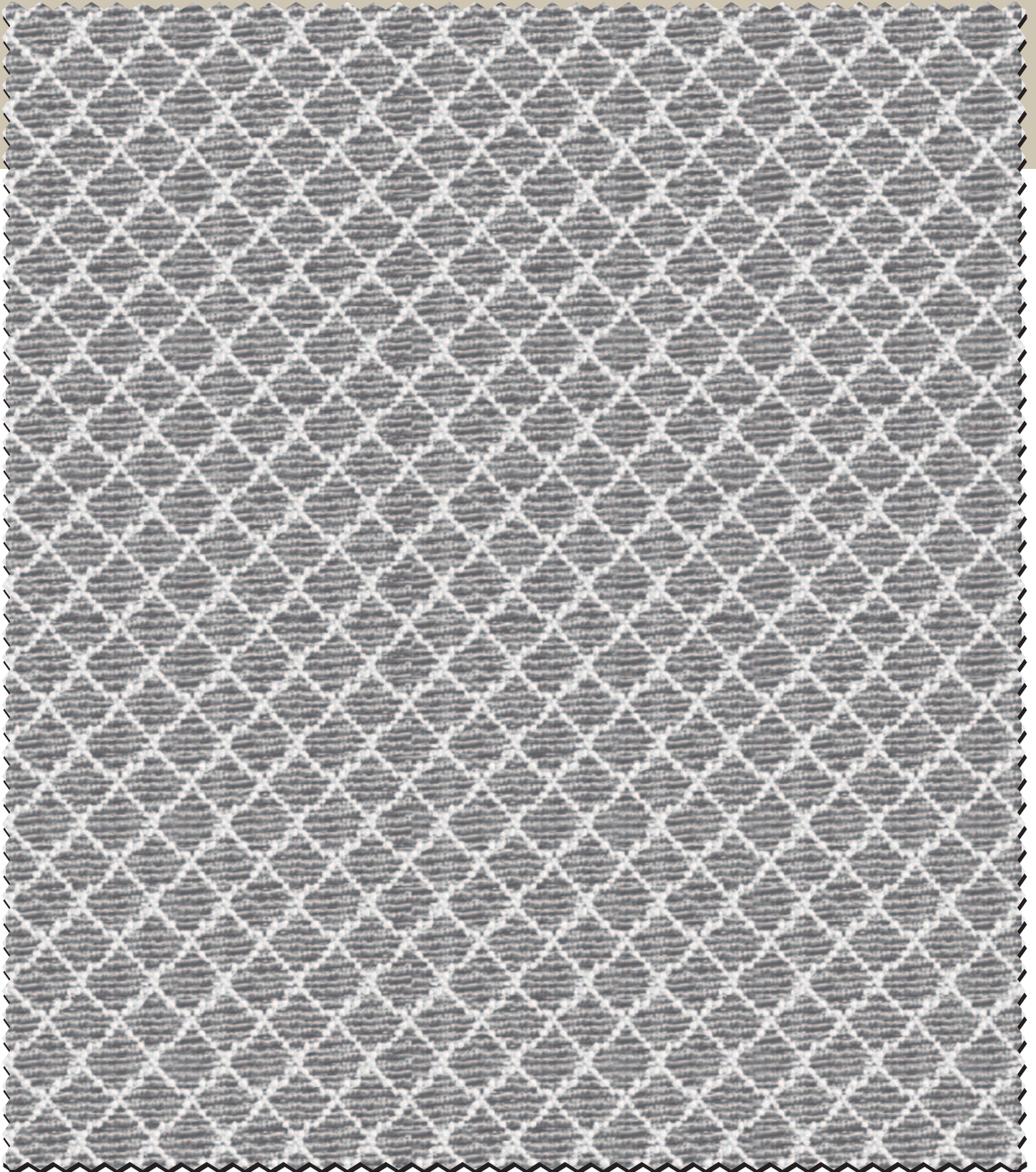




SKU	WIDTH	COMPOSITION	GSM	END USE
24	48"/122 cms	40% Cotton, 60% Poly	260	



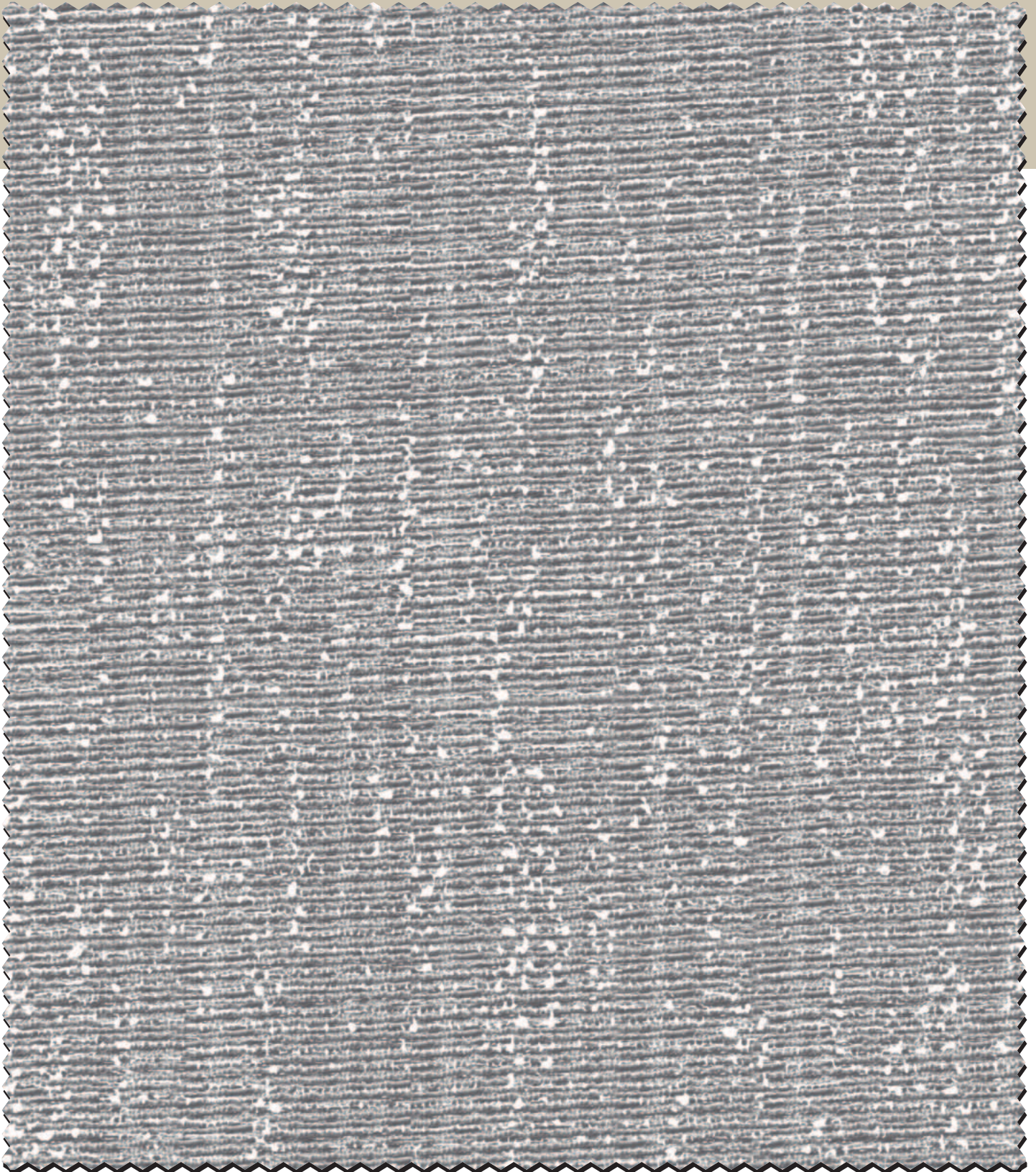
SKU	WIDTH	COMPOSITION	GSM	END USE
24	48"/122 cms	40% Cotton, 60% Poly	260	



S. No. 19



SKU	WIDTH	COMPOSITION	GSM	END USE
24	48"/122 cms	40% Cotton, 60% Poly	260	 

S. No. 20



SKU	WIDTH	COMPOSITION	GSM	END USE
24	48"/122 cms	40% Cotton, 60% Poly	260	 

S. No. 21





**rayna decor**[®]
Home Furnishing & Designs

Scan for E-Catalogue

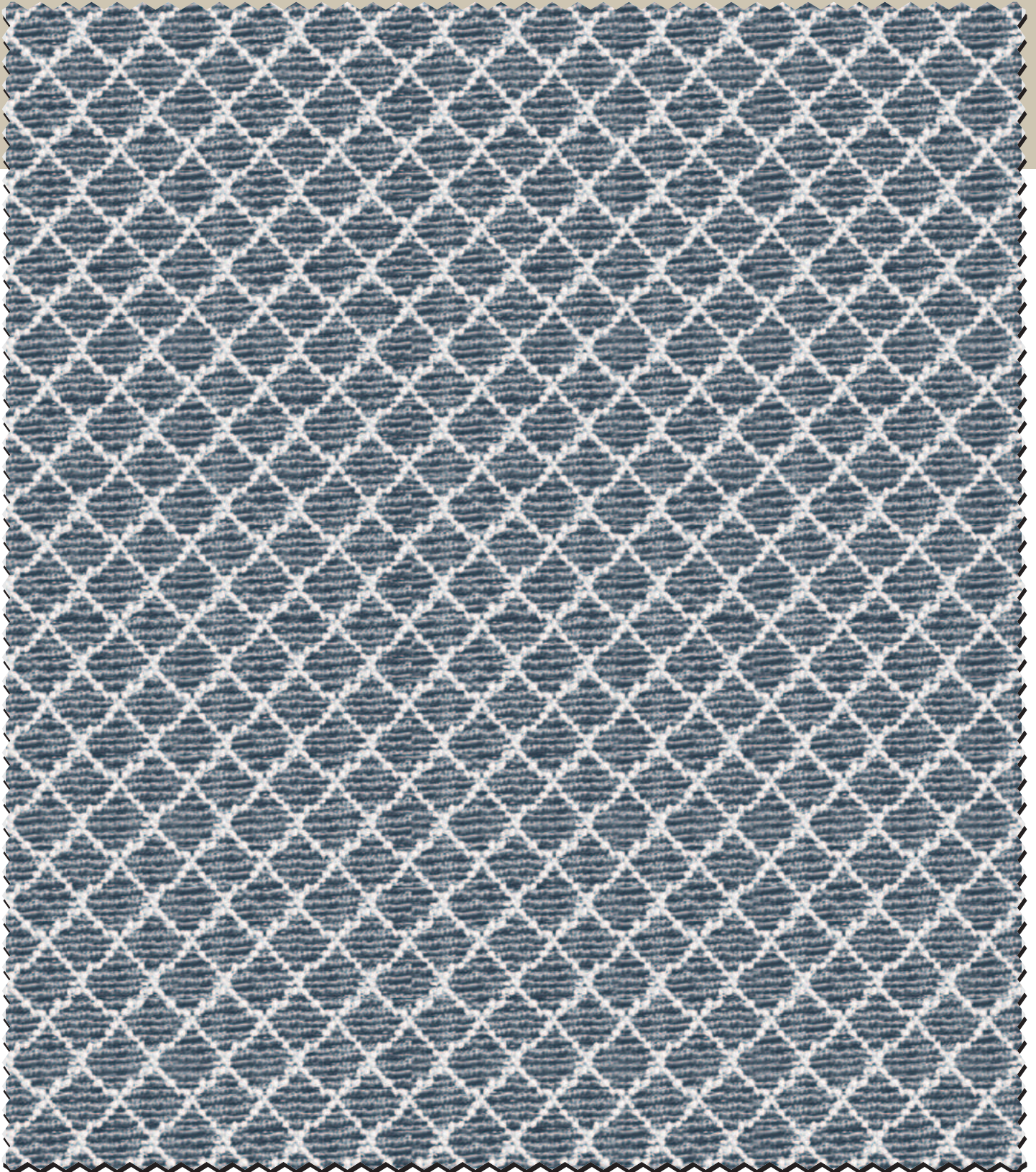




NEUTRALS



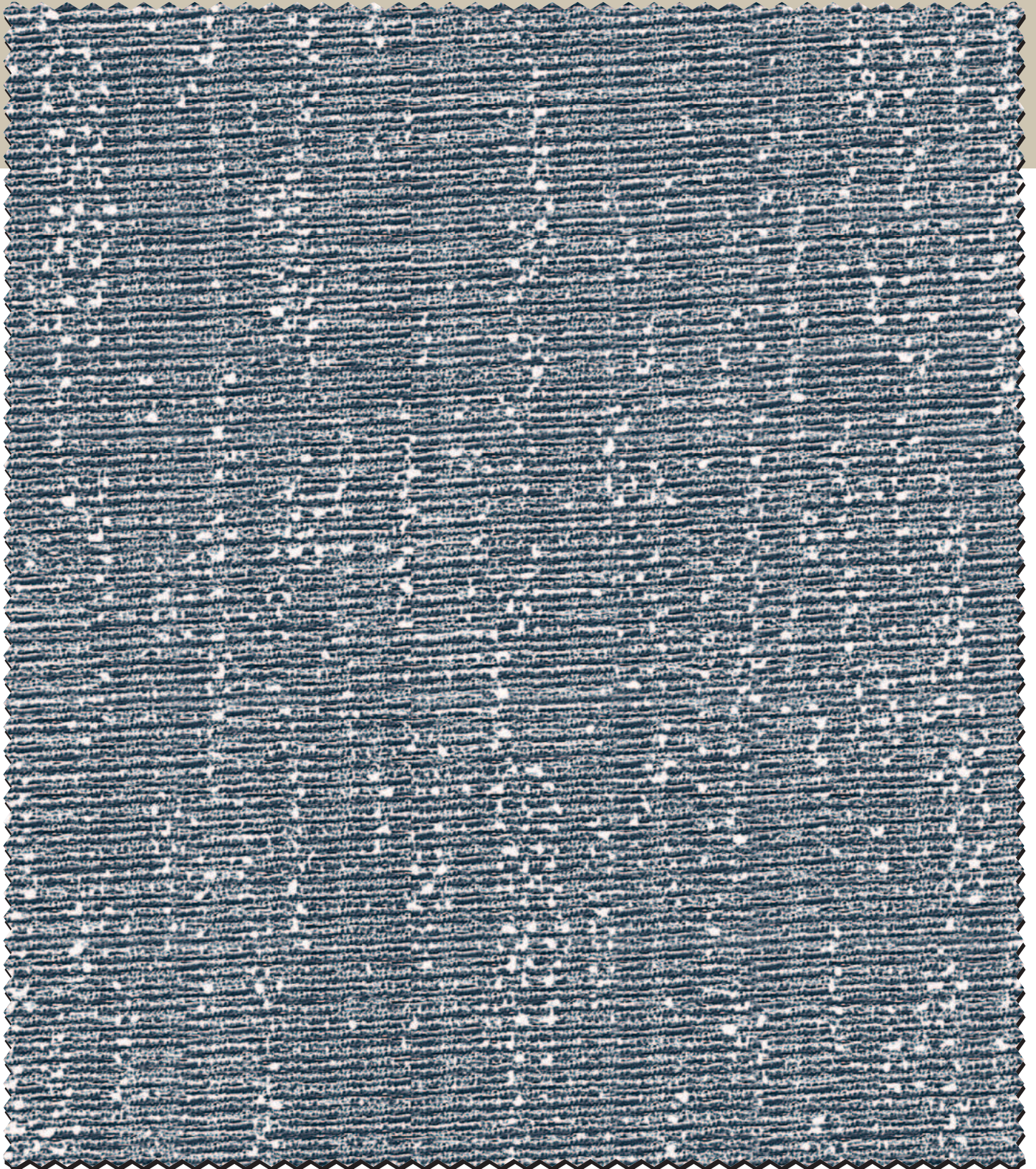
SKU	WIDTH	COMPOSITION	GSM	END USE
24	48"/122 cms	40% Cotton, 60% Poly	260	 



S. No. 22



SKU	WIDTH	COMPOSITION	GSM	END USE
24	48"/122 cms	40% Cotton, 60% Poly	260	 

S. No. 23



SKU	WIDTH	COMPOSITION	GSM	END USE
24	48"/122 cms	40% Cotton, 60% Poly	260	 

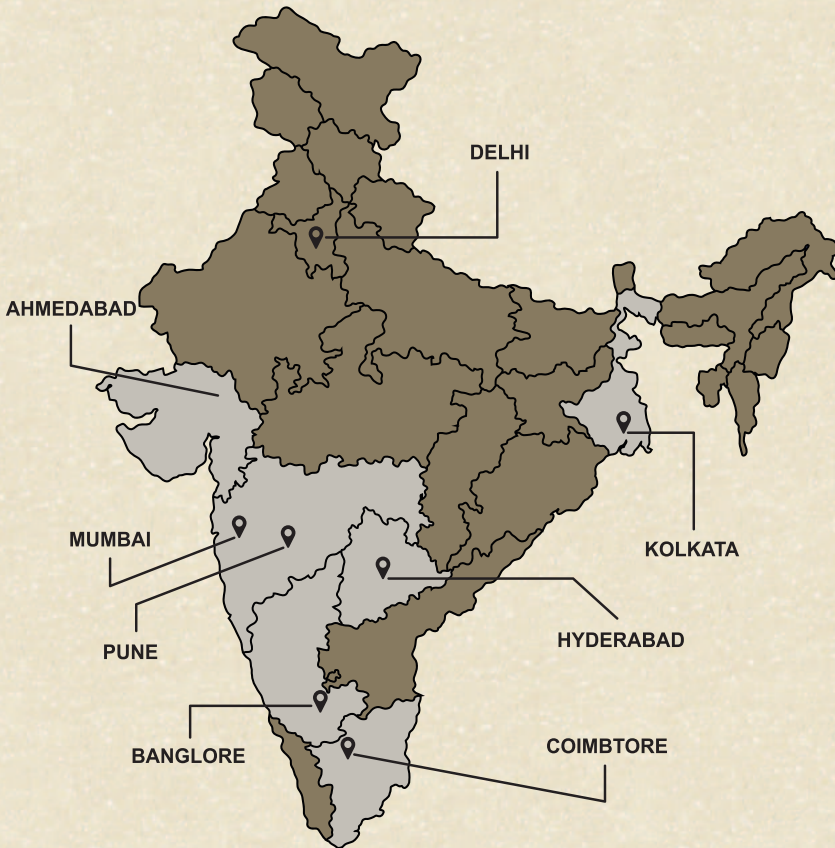
S. No. 24



rayna decor[®]


Home Furnishing & Designs

OUR BRANCH STORES IN INDIA



Transform your space with us.

www.raynadecor.in

COLLECTION	SKU	WIDTH	COMPOSITION	GSM	END USE
NEUTRALS	24	48"/122 cms	40% Cotton, 60% Poly	260	

Scan for RRP



- We do not accept responsibility for any stain resulting from inappropriate use, chemical cleaning or additional impregnation.
- Test results were gathered from various sample & therefore represents average indicative values.
- Discoloration caused by clothing fabrics such as jeans does not represent a material defect.
- Minor colour deviation within permissible industrial tolerance standard within lot to lot fabrics should be acceptable

colors shades may slightly vary from dye lot to dye lot



Scan for E-Catalogue

